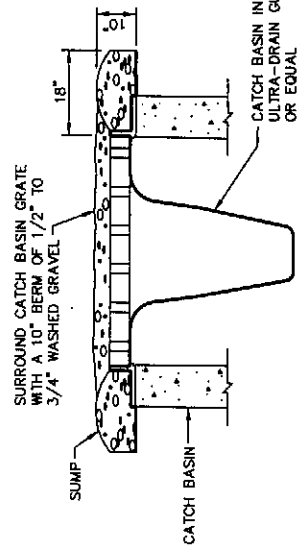


WIRE FABRIC NOT REQUIRED FOR SILT FENCE INSTALLED AROUND INLETS.

**TEMPORARY SILT FENCE DETAIL 1**

NTS

C2

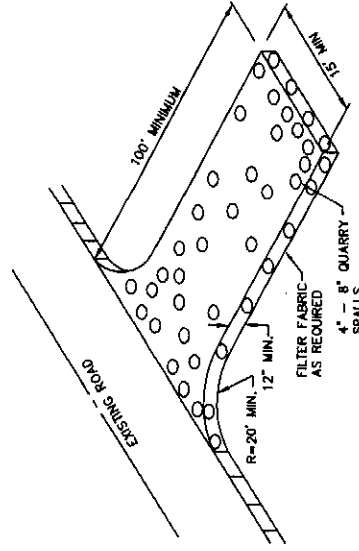


CATCH BASIN GRATES SHALL REMAIN BERMED UNTIL COMMENCEMENT OF PAVING.

**CATCH BASIN INLET PROTECTION 2**

NTS

C7



PURPOSE:  
TO REDUCE THE AMOUNT OF MUD, DIRT, ROCKS, ETC. TRANSPORTED ONTO PUBLIC ROADS BY MOTOR VEHICLES OR RUNOFF BY CONSTRUCTING A STABILIZED PAD OF ROCK SPALLS AT ENTRANCES TO CONSTRUCTION SITES.

NOTE: IF THE ROCK PAD IS NOT EFFECTIVE IN REMOVING MATERIAL FROM VEHICLES, TIRES, OR ADEQUATELY FILTERING RUNOFF FROM THE SITE, OTHER MEASURES MAY BE REQUIRED BY THE OWNER.

GENERAL:

MATERIAL SHOULD BE QUARRY SPALLS, 4" - 8" IN SIZE.

THE ROCK PAD SHALL BE AT LEAST 12 INCHES THICK, 15 FEET IN WIDTH MIN. AND 100 FEET IN LENGTH.

ADDITIONAL ROCK MAY HAVE TO BE ADDED PERIODICALLY TO MAINTAIN PROPER FUNCTION OF THE PAD.

ANY ROCK SPALLS THAT ARE LOOSENED FROM THE PAD AND END UP ON THE ROADWAY SHALL BE REMOVED IMMEDIATELY.

**STABILIZED CONSTRUCTION ENTRANCE DETAIL 3**

NTS

C2

**GENERAL NOTES**

THE NOTES AND DETAILS PROVIDED ON THIS SHEET SERVE AS THE PROJECT STORMWATER POLLUTION PREVENTION PLAN (SWPPP) AND ILLUSTRATE SOME OF THE MOST COMMON TEMPORARY EROSION/SILTATION CONTROL BEST MANAGEMENT PRACTICES (BMPs). ALTHOUGH SOME MEASURES SHOWN HERE MAY NOT BE SPECIFIED FOR THIS PROJECT, THE DETAILS ARE PROVIDED FOR FUTURE REFERENCE SHOULD SITE CONDITIONS REQUIRE ADDITIONAL MEASURES BEYOND THOSE SPECIFIED. APPROPRIATE RESPONSES TO UNANTICIPATED SITE CONDITIONS MAY INCLUDE, BUT ARE NOT LIMITED TO, THE FOLLOWING ADDITIONAL BMPs:

- STRAW MULCH
- BRUSH OR GRAVEL FILTER BERMS
- TIRE WASH STATIONS
- SODDING
- JUTE OR SYNTHETIC MATTING, EITHER GENERIC OR PROPRIETARY
- ANCHORED PLASTIC CHECK DAMS
- ROCK CHECK DAMS
- DUST CONTROL
- SLOPE SCARIFICATION OR TERRACING
- ROCK CHECK DAMS
- DUST CONTROL

SUCH MEASURES SHALL BE SELECTED BY THE CONTRACTOR IN CONSULTATION WITH THE PROJECT CIVIL ENGINEER AND SHALL BE INSTALLED PER MANUFACTURER'S SPECIFICATIONS, ENGINEER'S DESIGN OR STANDARD CONSTRUCTION INDUSTRY PRACTICE, AS THE SITUATION DICTATES.

1. THE TEMPORARY EROSION/SEDIMENTATION CONTROL FACILITIES SHALL BE CONSTRUCTED PRIOR TO ANY GRADING OR LAND CLEARING IN ANY DISTURBED AREA. THE FACILITIES SHALL BE MAINTAINED THROUGHOUT THE CONSTRUCTION PERIOD AND SHALL BE MAINTAINED UNTIL CONSTRUCTION AND LANDSCAPING IS COMPLETED AND THE POTENTIAL FOR ON-SITE EROSION HAS PASSED.

2. NONCOMPLIANCE WITH THE EROSION CONTROL REQUIREMENTS, WATER QUALITY REQUIREMENTS, AND/OR CLEARING LIMITS MAY RESULT IN REVOCATION OF SUBJECT PERMITS OR PLAN APPROVAL, FINES, AND BOND FORFEITURES.

3. FACILITIES SHOWN ON THIS PLAN ARE THE MINIMUM REQUIREMENTS FOR ANTICIPATED SITE CONDITIONS. THE CONTRACTOR SHALL BE RESPONSIBLE FOR PROVIDING IMPROVED OR MODIFIED FACILITIES AS NECESSARY TO MAINTAIN RUNOFF WATER QUALITY DURING AND AFTER SIGNIFICANT STORM EVENTS IN ORDER TO ADDRESS THE ACTUAL SITE AND SOILS CONDITIONS ENCOUNTERED.

4. CONTRACTOR SHALL MAINTAIN ON-SITE AT ALL TIMES SUFFICIENT QUANTITIES OF EROSION CONTROL MATERIALS TO COVER ALL EXPOSED SOIL IN THE EVENT OF UNANTICIPATED WEATHER CONDITIONS. CONTRACTOR MAY CONSIDER PHASING GRADING ON LARGE SITES TO MINIMIZE BARE SOIL EXPOSURE.

5. THE IMPLEMENTATION OF THESE PLANS AND THE CONSTRUCTION, MAINTENANCE, REPLACEMENT, AND UPGRADING OF THE FACILITIES IS THE RESPONSIBILITY OF THE APPLICANT/CONTRACTOR UNTIL ALL CONSTRUCTION IS APPROVED.

6. ANY AREA STRIPPED OF VEGETATION WITH EXPOSED SOILS, INCLUDING ROADWAY EMBANKMENTS, THAT ARE NOT DISTURBED FOR TWO (2) YEARS (FROM 10/1/07) OR SIX (6) MONTHS (FROM 10/1/07) SHALL BE IMMEDIATELY STABILIZED WITH APPROVED METHODS (E.G. SEEDING, MULCHING, NETTING, EROSION BLANKETS, PLASTIC COVERING, ETC.). SOIL STOCKPILES SHALL BE STABILIZED WITHIN 24 HOURS.

7. WHERE STRAW MULCH FOR TEMPORARY EROSION CONTROL IS REQUIRED, IT SHALL BE APPLIED AT A MINIMUM THICKNESS OF TWO INCHES.

**SEEDING NOTES**

1. ALL DISTURBED AREAS SHALL BE SEEDING OR LANDSCAPED IN ACCORDANCE WITH THE LANDSCAPE PLANS AND SPECIFICATIONS.

2. EFFECTIVE SEEDING IS BEST ACCOMPLISHED DURING THE MONTHS OF APRIL, MAY, JUNE, AND SEPTEMBER. SEEDING DURING JULY AND AUGUST MAY REQUIRE SUBSTANTIAL IRRIGATION. SEE WINTER GRADING NOTE ABOVE.

3. CONSTRUCTION ACCEPTANCE WILL BE SUBJECT TO A WELL ESTABLISHED GROUND COVER THAT FULFILLS THE REQUIREMENT OF THE APPROVED SWPPP AND THE LANDSCAPE PLANS.

**CONTRACTOR RESPONSIBILITY FOR EROSION/SILTATION CONTROL**

IN THE EVENT THAT THE INSTALLED WATER QUALITY CONTROL MEASURES ARE INEFFECTIVE IN CONTROLLING EROSION AND TO PREVENT POLLUTANTS FROM ENTERING OFF-SITE DRAINAGE COURSES, SLASH PILES AND OTHER SOLID WASTE SHALL BE DISPOSED OF IN ACCORDANCE WITH ALL APPLICABLE LOCAL REGULATIONS.

DUST CONTROL SHALL BE INCLUDED IN THE SCOPE OF THE EROSION AND SEDIMENT CONTROL REQUIREMENTS. THE CONTRACTOR SHALL WATER ALL DISTURBED AREAS AS NEEDED TO PREVENT WIND BLOWN DUST AT ALL TIMES.

CONTRACTORS SHALL USE INDUSTRY BEST MANAGEMENT PRACTICES TO PREVENT PETROLEUM PRODUCTS, FERTILIZERS, CONCRETE BY PRODUCTS, AND OTHER POLLUTANTS FROM ENTERING OFF-SITE DRAINAGE COURSES. SLASH PILES AND OTHER SOLID WASTE SHALL BE DISPOSED OF IN ACCORDANCE WITH ALL APPLICABLE LOCAL REGULATIONS.

ALL SUPPLIES AND MATERIALS NECESSARY FOR IMPLEMENTING BMPs SHALL BE STORED ON SITE AND SHALL BE IMMEDIATELY AVAILABLE FOR USE. SUCH SUPPLIES AND MATERIALS SHALL INCLUDE, BUT NOT BE LIMITED TO, STRAW BALES OR OTHER MULCHING MATERIAL, SILT FENCING AND STAKES, FILTER FABRIC, ETC.

DURING AND AFTER RUNOFF PRODUCING STORM EVENTS, CONTRACTOR SHALL MONITOR ALL EROSION CONTROL MEASURES AND SHALL PRIORITIZE IMPLEMENTATION AND MAINTENANCE OF EROSION AND SILTATION CONTROL MEASURES ABOVE ALL OTHERS.

IT IS THE INTENT OF THE SWPPP THAT STORMWATER RUNOFF BE CONTROLLED AT ALL TIMES TO PREVENT SOIL EROSION AND TO MAINTAIN WATER QUALITY. ANY AND ALL MEASURES NECESSARY TO DO SO SHALL BE EMPLOYED BY THE CONTRACTOR.

REGARDLESS OF SITE, WEATHER, SOIL OR OTHER CONDITIONS, THE CONTRACTOR SHALL BE FULLY RESPONSIBLE FOR ENSURING THAT EROSION DOES NOT OCCUR ON THE SITE AND THAT POLLUTED OR SILT-LADEN RUNOFF DOES NOT LEAVE THE SITE OR ENTER INTO ANY CREEK, WETLAND, OR WATER BODY ON THE SITE.

BEYOND THE MINIMUM REQUIREMENTS SHOWN ON THIS PLAN, THE CONTRACTOR SHALL BE RESPONSIBLE FOR SELECTING AND IMPLEMENTING APPROPRIATE METHODS, "BEST MANAGEMENT PRACTICES" (BMPs), FOR STORMWATER TREATMENT AND CONTROL THAT MEET THE REQUIREMENTS OF BOTH THE WASHINGTON STATE DEPARTMENT OF ECOLOGY AND CITY OF WENACHEE.

THE CONTRACTOR SHALL REPORT ALL WATER QUALITY CONCERNS AND ACTIVITIES TO THE PROJECT CIVIL ENGINEER.

IN THE EVENT THAT THE INSTALLED WATER QUALITY CONTROL MEASURES ARE INEFFECTIVE IN CONTROLLING EROSION AND TO PREVENT POLLUTANTS FROM ENTERING OFF-SITE DRAINAGE COURSES, SLASH PILES AND OTHER SOLID WASTE SHALL BE DISPOSED OF IN ACCORDANCE WITH ALL APPLICABLE LOCAL REGULATIONS.

DUST CONTROL SHALL BE INCLUDED IN THE SCOPE OF THE EROSION AND SEDIMENT CONTROL REQUIREMENTS. THE CONTRACTOR SHALL WATER ALL DISTURBED AREAS AS NEEDED TO PREVENT WIND BLOWN DUST AT ALL TIMES.

CONTRACTORS SHALL USE INDUSTRY BEST MANAGEMENT PRACTICES TO PREVENT PETROLEUM PRODUCTS, FERTILIZERS, CONCRETE BY PRODUCTS, AND OTHER POLLUTANTS FROM ENTERING OFF-SITE DRAINAGE COURSES. SLASH PILES AND OTHER SOLID WASTE SHALL BE DISPOSED OF IN ACCORDANCE WITH ALL APPLICABLE LOCAL REGULATIONS.

ALL SUPPLIES AND MATERIALS NECESSARY FOR IMPLEMENTING BMPs SHALL BE STORED ON SITE AND SHALL BE IMMEDIATELY AVAILABLE FOR USE. SUCH SUPPLIES AND MATERIALS SHALL INCLUDE, BUT NOT BE LIMITED TO, STRAW BALES OR OTHER MULCHING MATERIAL, SILT FENCING AND STAKES, FILTER FABRIC, ETC.

DURING AND AFTER RUNOFF PRODUCING STORM EVENTS, CONTRACTOR SHALL MONITOR ALL EROSION CONTROL MEASURES AND SHALL PRIORITIZE IMPLEMENTATION AND MAINTENANCE OF EROSION AND SILTATION CONTROL MEASURES ABOVE ALL OTHERS.



EXPIRES 11/08/08

**GENERAL NOTES**

DESIGNED BY	RS
DRAWN BY	MR, DG
CHECKED BY	AM
APPROVED BY	
DATE PRINTED	09/20/07
SCALE	AS SHOWN
P.B. NO.	0523004-03

**REVISIONS**

NO.	DESCRIPTION	DATE

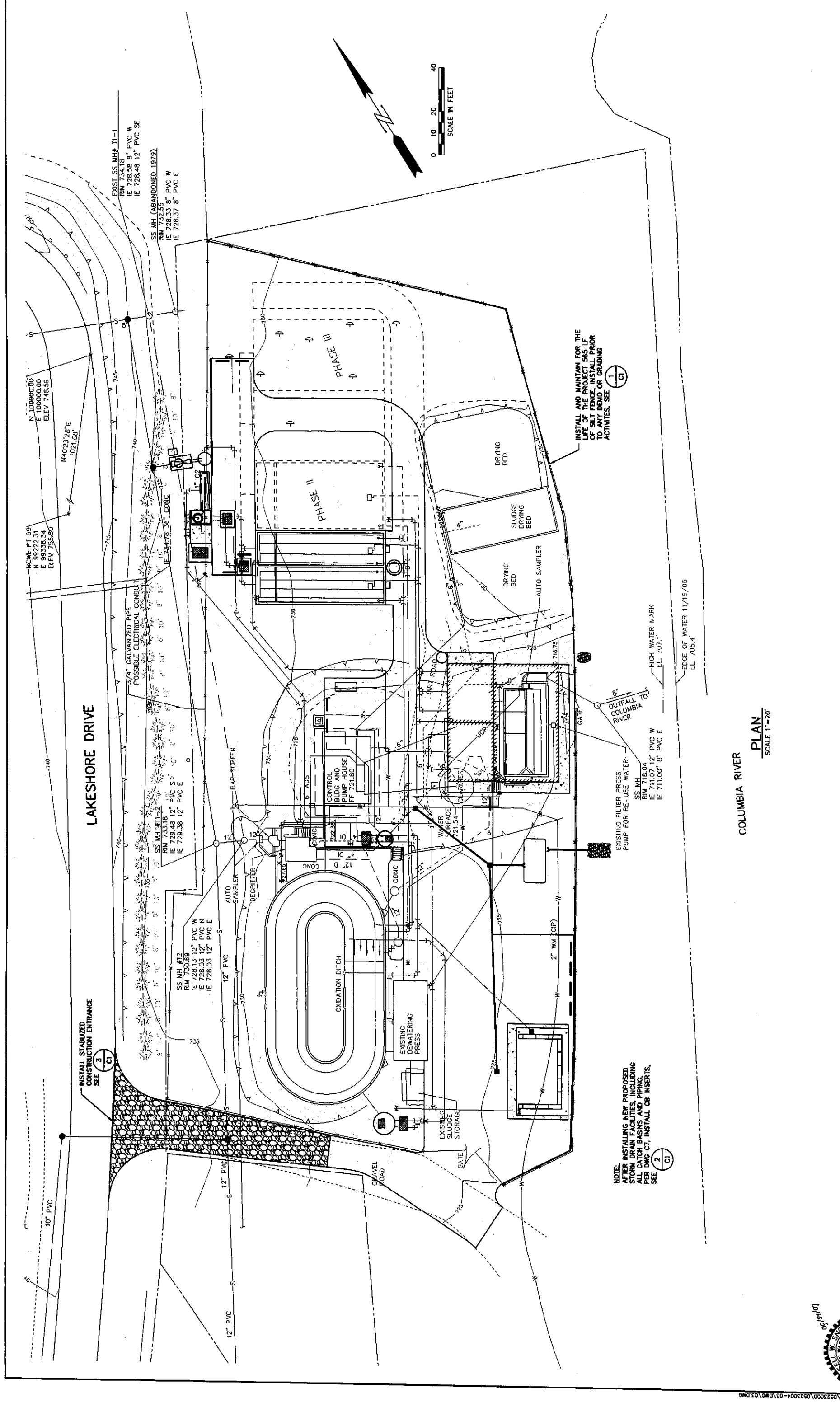
**HAMMOND COLLIER**  
WADE LIVINGSTONE

SEATTLE (206) 632-2664  
WENACHEE (509) 662-1762  
OMAK (509) 826-5861  
LAKEWOOD (253) 472-1992

CITY OF ENTIAI  
2007 WASTEWATER TREATMENT  
FACILITIES IMPROVEMENTS


TESC NOTES AND DETAILS

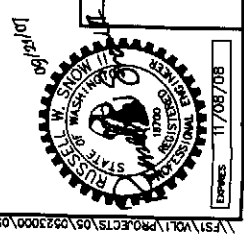
JOB NO. 0523004-03  
DRAWING NO. C1  
SHEET OF



COLUMBIA RIVER

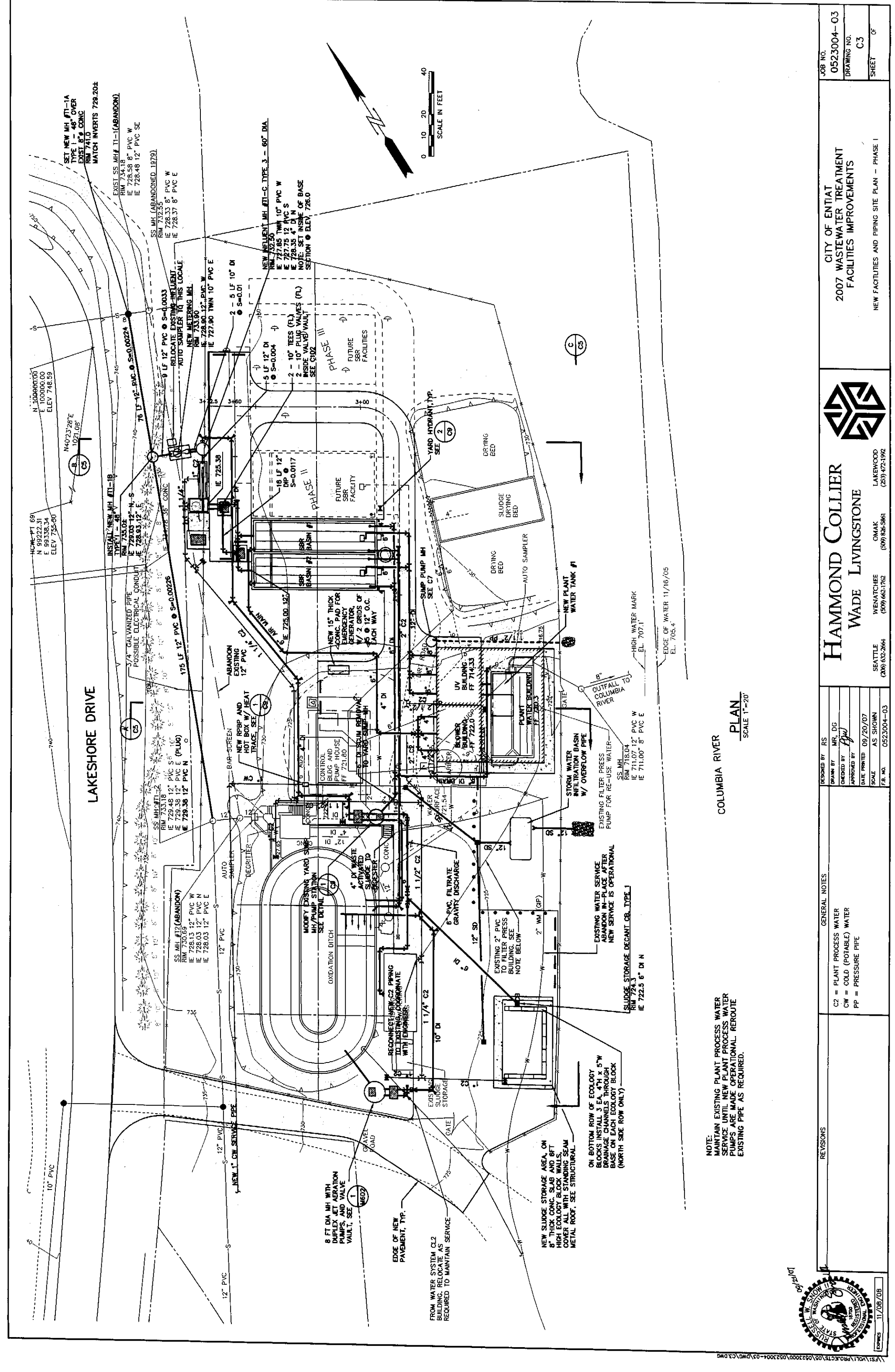
PLAN  
SCALE 1"=20'

 <p><b>HAMMOND COLLIER WADE LIVINGSTONE</b></p>	<p>CITY OF ENTIAI 2007 WASTEWATER TREATMENT FACILITIES IMPROVEMENTS</p>		<p>JOB NO. 0523004-03</p>
	<p>TESC PLAN</p>		<p>DRAWING NO. C2</p>
<p>DESIGNED BY: RS</p> <p>DRAWN BY: MR. DG</p> <p>CHECKED BY: <i>[Signature]</i></p> <p>APPROVED BY: <i>[Signature]</i></p> <p>DATE PRINTED: 09/20/07</p> <p>SCALE: AS SHOWN</p> <p>F.B. NO.: 0523004-03</p>	<p>SEATTLE (206) 632-2664</p> <p>WENATCHEE (509) 662-1762</p> <p>OMAK (509) 826-5861</p> <p>LAKENWOOD (253) 472-1992</p>	<p>SHEET OF</p>	



11/08/08

\\FS1\work\projects\0523004-03\DWG\C3.DWG




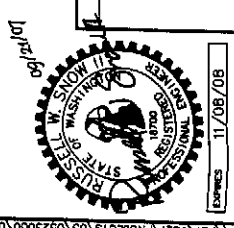
LAKESHORE DRIVE

COLUMBIA RIVER

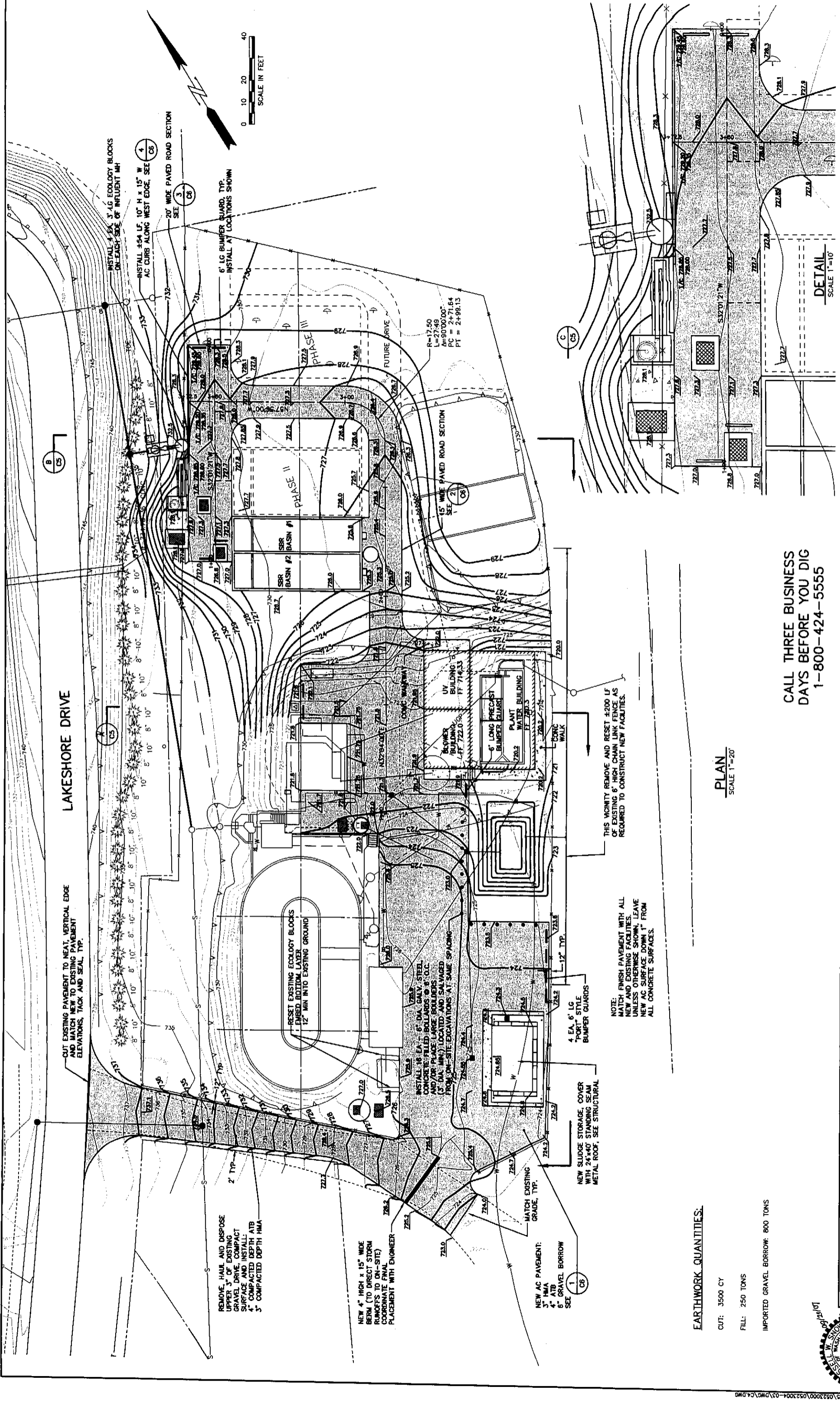
NOTE: MAINTAIN EXISTING PLANT PROCESS WATER SERVICE UNTIL NEW PLANT PROCESS WATER PUMPS ARE MADE OPERATIONAL. REROUTE EXISTING PIPE AS REQUIRED.

PLAN  
SCALE 1"=20'

 <b>HAMMOND COLLIER</b> <b>WADE LIVINGSTONE</b>	CITY OF ENTIAI 2007 WASTEWATER TREATMENT FACILITIES IMPROVEMENTS	JOB NO. 0523004-03
	NEW FACILITIES AND PIPING SITE PLAN - PHASE I	DRAWING NO. C3
SEATTLE (206) 632-2664 OMAHA (531) 826-5861 LAKEWOOD (253) 472-1192	WENATCHEE (509) 663-1762	SHEET OF
DESIGNED BY: RS DRAWN BY: MR. DG CHECKED BY: [Signature] APPROVED BY: [Signature]	GENERAL NOTES C2 = PLANT PROCESS WATER CW = COLD (POTABLE) WATER PP = PRESSURE PIPE	DATE PRINTED: 09/20/07 SCALE: AS SHOWN JOB NO.: 0523004-03
REVISIONS	REVISIONS	11/09/08



\\fs1\vol1\Projects\0523004\0523004-03\DWG\C3.DWG



LAKESHORE DRIVE

CUT EXISTING PAVEMENT TO NEAT, VERTICAL EDGE AND MATCH NEW TO EXISTING PAVEMENT ELEVATIONS, TACK AND SEAL, TYP.

INSTALL 4 EA. 3' LG ECOLOGY BLOCKS ON EACH SIDE OF INFLUENT MH

INSTALL #44 LF. 10" H x 15" W AC CURB ALONG WEST EDGE, SEE 4

20' WIDE PAVED ROAD SECTION SEE 3

REMOVE, HAUL AND DISPOSE UPPER 3" OF EXISTING GRAVEL DRIVE, COMPACT SURFACE AND INSTALL 2" COMPACTED DEPTH ATB 3" COMPACTED DEPTH HMA

NEW 4' HIGH x 15" WIDE BERM (TO DIRECT STORM RUNOFFS TO ON-SITE) COORDINATE FINAL PLACEMENT WITH ENGINEER

RESET EXISTING ECOLOGY BLOCKS EMBED BOTTOM LAYER 12" MIN INTO EXISTING GROUND

INSTALL 16 EA. 6" DIA. GALV. STEEL CONCRETE FILLED BOLLARDS @ 9' O.C. AND/OR PLACE LARGE BOLLARDS (6" DIA. MIN) LOCATED AND SALVAGED FROM ON-SITE EXCAVATIONS AT SAME SPACING

NEW AC PAVEMENT:  
3" HMA  
4" ATB  
6" GRAVEL BORROW  
SEE 1

NEW SLUDGE STORAGE, COVER WITH 24" x 40" STANDING SEAM METAL ROOF, SEE STRUCTURAL

4 EA. 6' LG PORT STYLE BUMPER GUARDS

NOTE: MATCH FINISH PAVEMENT WITH ALL NEW AND EXISTING FACILITIES, UNLESS OTHERWISE SHOWN, LEAVE NEW AC SURFACE DOWN 1" FROM ALL CONCRETE SURFACES.

THIS VICINITY REMOVE AND RESET 4200 LF OF EXISTING 6" HIGH CHAIN LINK FENCE AS REQUIRED TO CONSTRUCT NEW FACILITIES.

R=17.50  
L=27.49  
A=90°00'00"  
PC = 2+71.64  
PT = 2+99.13

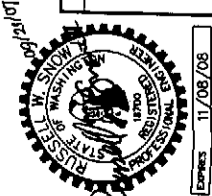
15' WIDE PAVED ROAD SECTION SEE 2

EARTHWORK QUANTITIES:

- CUT: 3500 CY
- FILL: 250 TONS
- IMPORTED GRAVEL BORROW: 800 TONS

PLAN  
SCALE 1"=20'

CALL THREE BUSINESS DAYS BEFORE YOU DIG 1-800-424-5555



REVISIONS

NO.	DATE	DESCRIPTION

GENERAL NOTES

Z24.0 = FINISH GRADE ELEVATION  
T/C = TOP OF CURB ELEVATION

DESIGNED BY: RS  
DRAWN BY: MR. DG  
CHECKED BY: [Signature]  
APPROVED BY: [Signature]  
DATE PRINTED: 09/20/07  
SCALE: AS SHOWN  
F.B. NO.: 0523004-03

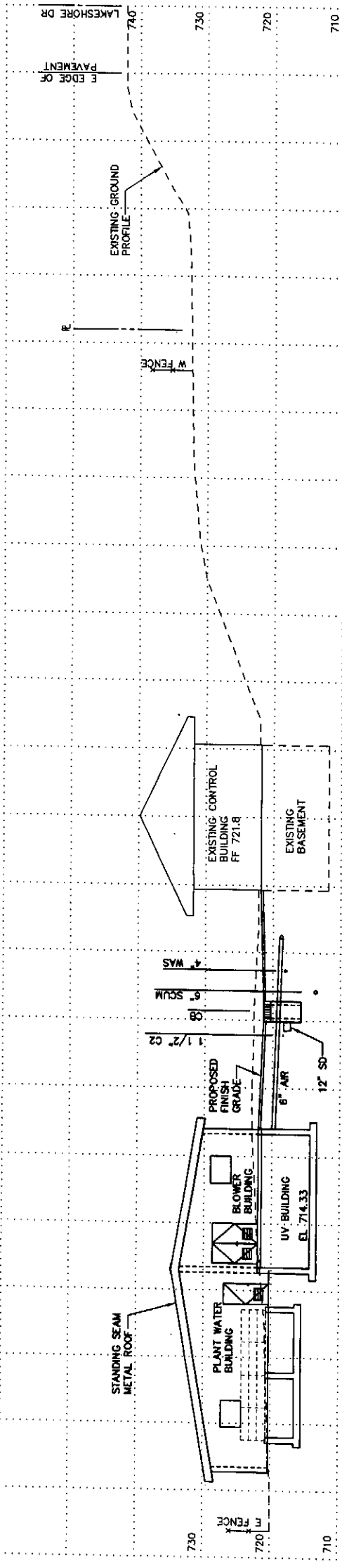
**HAMMOND COLLIER**  
WADE LIVINGSTONE

SEATTLE (206) 632-2664  
WENATCHEE (509) 662-1762  
OMAK (509) 826-5861  
LAKEWOOD (253) 472-1992

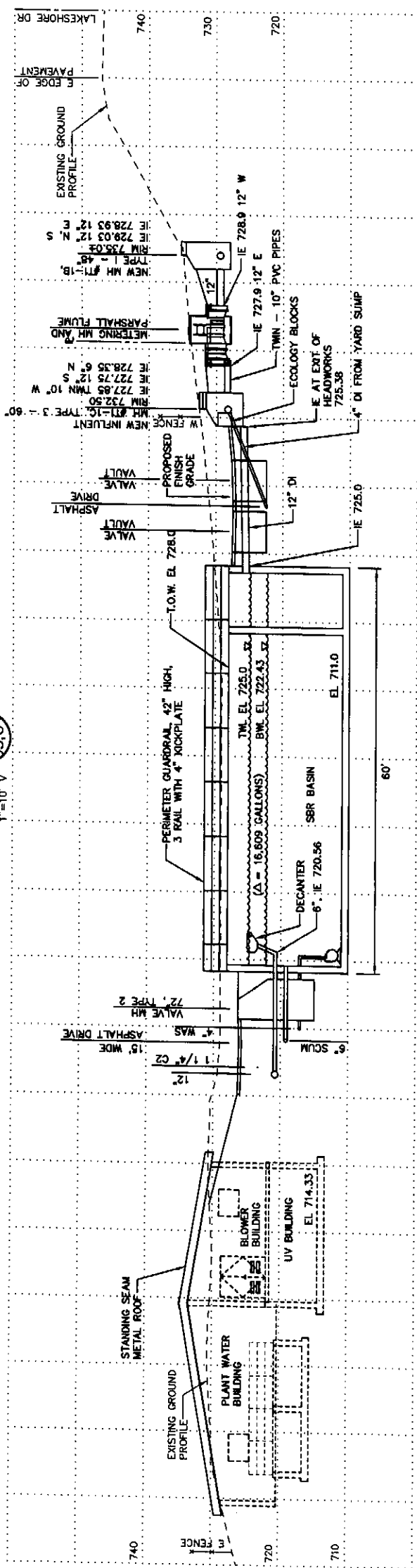
CITY OF ENTIAI  
2007 WASTEWATER TREATMENT FACILITIES IMPROVEMENTS

GRADING AND PAVING PLAN

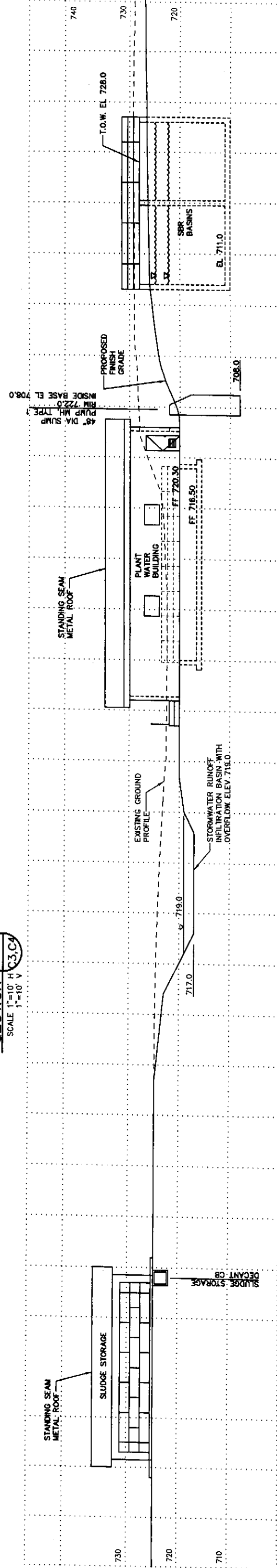
JOB NO. 0523004-03  
DRAWING NO. C4  
SHEET 0'



**SECTION A**  
SCALE 1"=10' H  
1"=10' V  
C3.CA



**SECTION B**  
SCALE 1"=10' H  
1"=10' V  
C3.CA

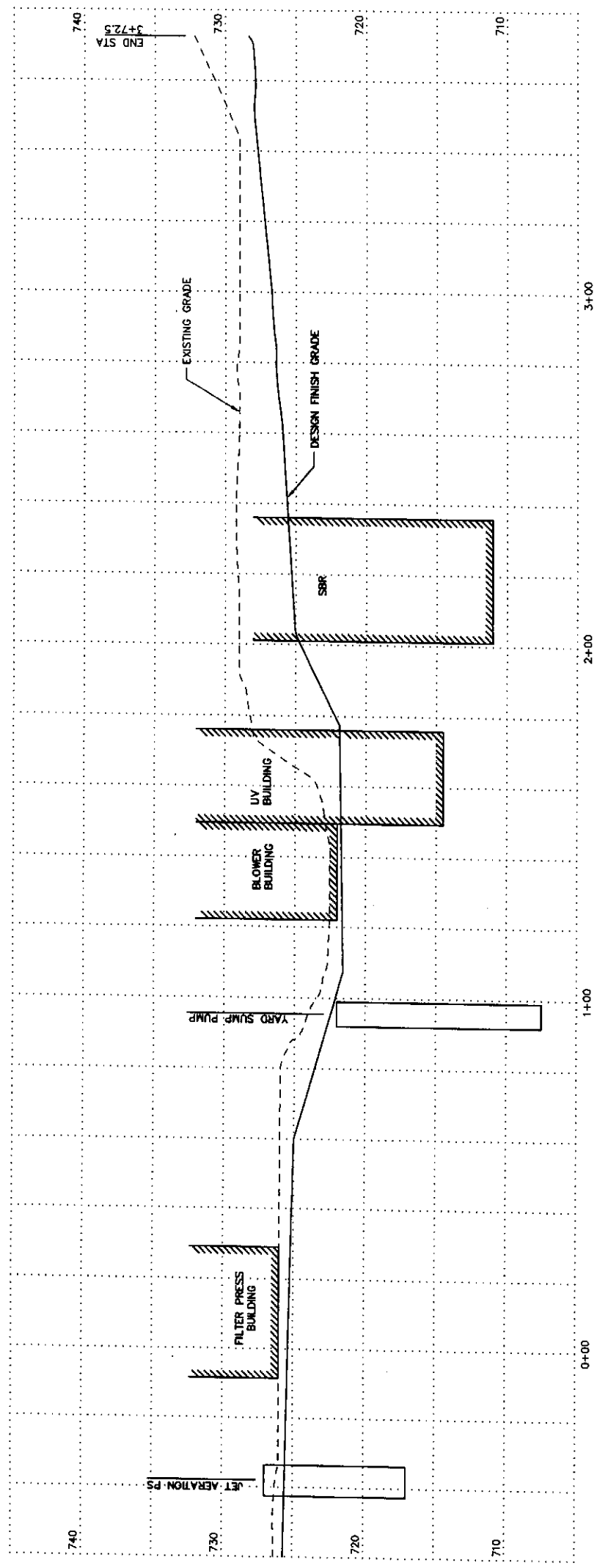


**SECTION C**  
SCALE 1"=10' H  
1"=10' V  
C3.CA

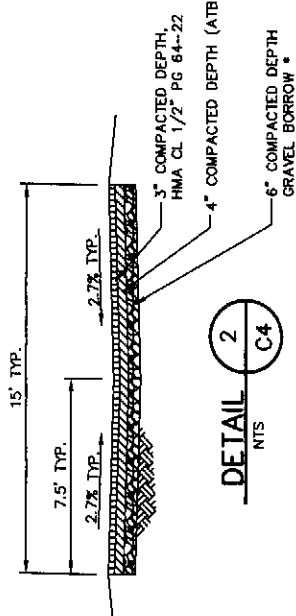
CALL THREE BUSINESS  
DAYS BEFORE YOU DIG  
1-800-424-5555

	CITY OF ENTIAI 2007 WASTEWATER TREATMENT FACILITIES IMPROVEMENTS	JOB NO. 0523004-03
	DRAWING NO. C5	SHEET 0F
SEATTLE (206) 632-2664 WENATCHEE (509) 662-1762 OMAHA (909) 826-8861 LAKELAND (253) 472-1992	SITE SECTIONS AND DETAILS	
REVISIONS	GENERAL NOTES	DESIGNED BY: RS DRAWN BY: MR, DC CHECKED BY: [Signature] APPROVED BY: [Signature] DATE PRINTED: 09/20/07 SCALE: AS SHOWN P.B. NO.: 0523004-03
	EXPIRES 11/08/08	

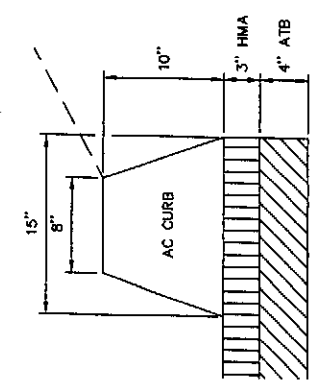
\\FS1\work\proj\0523004-03\DWG\C3.DWG



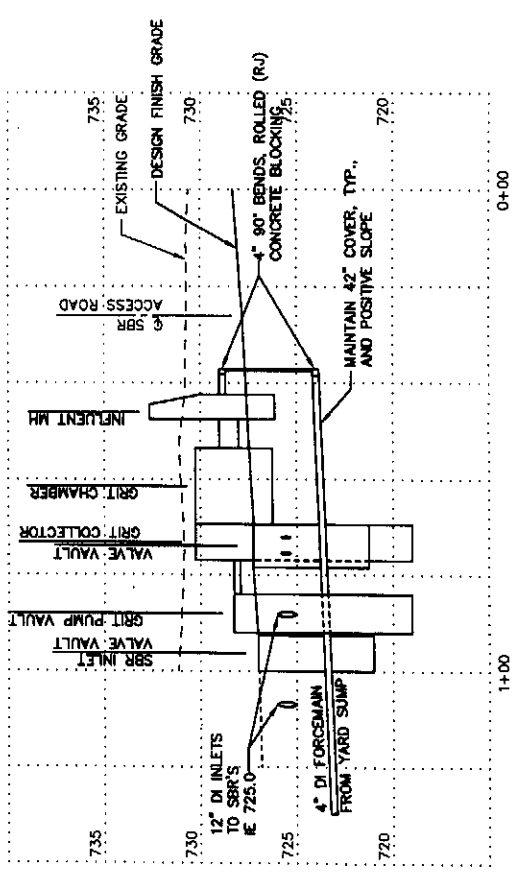
**SITE & SBR ACCESS ROAD PROFILE**  
SCALE 1"=20'H  
1"=5'V



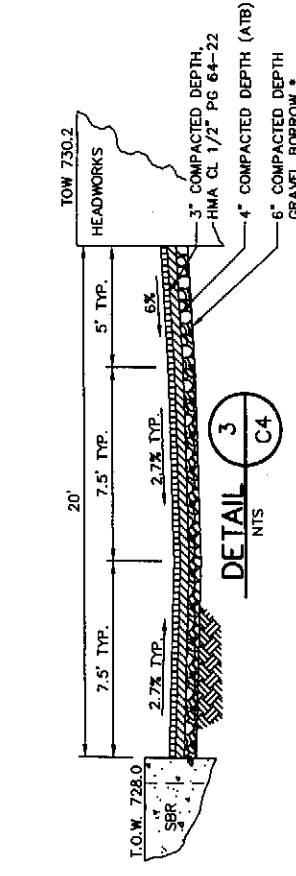
\*NOTE:  
NATIVE MATERIAL MAY BE  
SUBSTITUTED FOR GRAVEL BORROW  
WITH APPROVAL FROM ENGINEER.



**NEW AC CURB**  
SCALE 1/8"=1'-0"  
4  
C4



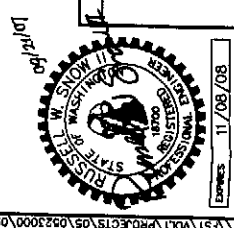
**HEADWORKS ACCESS ROAD PROFILE**  
SCALE 1"=20'H  
1"=5'V



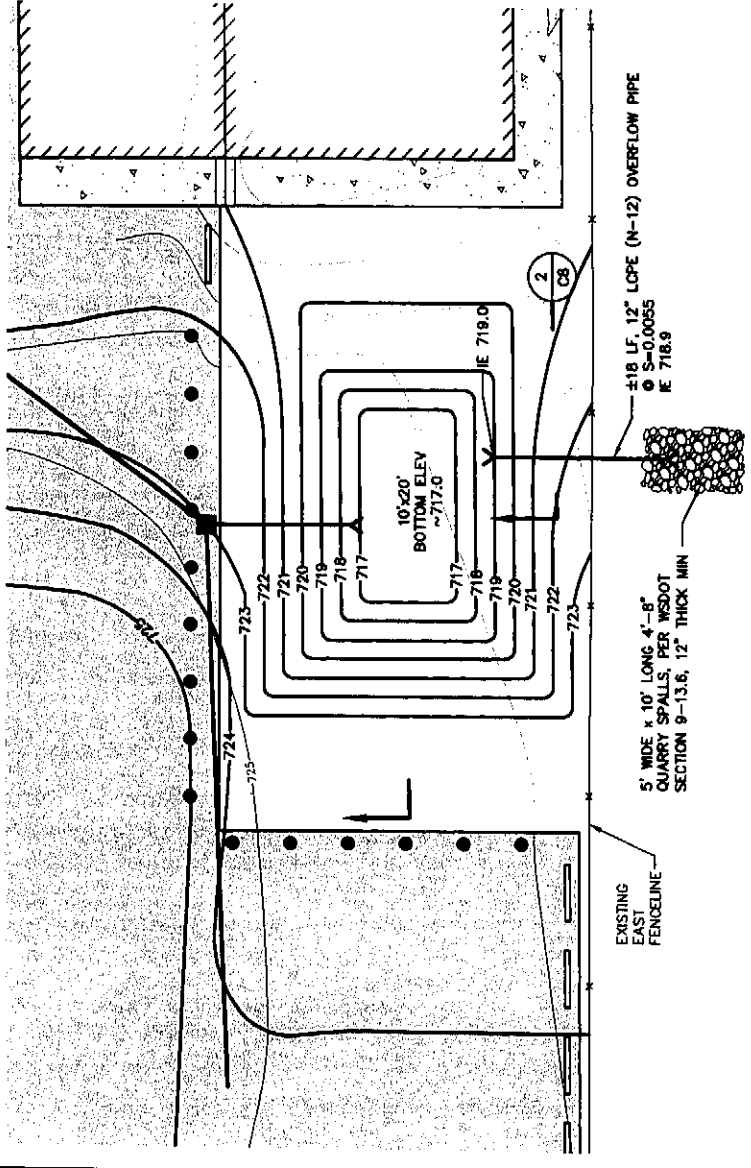
\*NOTE:  
NATIVE MATERIAL MAY BE  
SUBSTITUTED FOR GRAVEL BORROW  
WITH APPROVAL FROM ENGINEER.

<p><b>HAMMOND COLLIER WADE LIVINGSTONE</b></p>	<p>CITY OF ENTIAI 2007 WASTEWATER TREATMENT FACILITIES IMPROVEMENTS</p>	<p>JOB NO. 0523004-03</p>
	<p>SITE PROFILES AND PAVEMENT DETAILS</p>	<p>DRAWING NO. C6</p>
<p>SEATTLE (206) 532-2664 WENATCHEE (509) 662-1762 OMAK (509) 826-5861 LAKEWOOD (253) 472-1992</p>	<p>DESIGNED BY: RS DRAWN BY: MR. DG CHECKED BY: [Signature] APPROVED BY: [Signature]</p>	<p>SHEET OF</p>
<p>DATE PRINTED: 09/20/07 SCALE: AS SHOWN F.B. NO.: 0523004-03</p>	<p>REVISIONS</p>	<p>11/08/08</p>

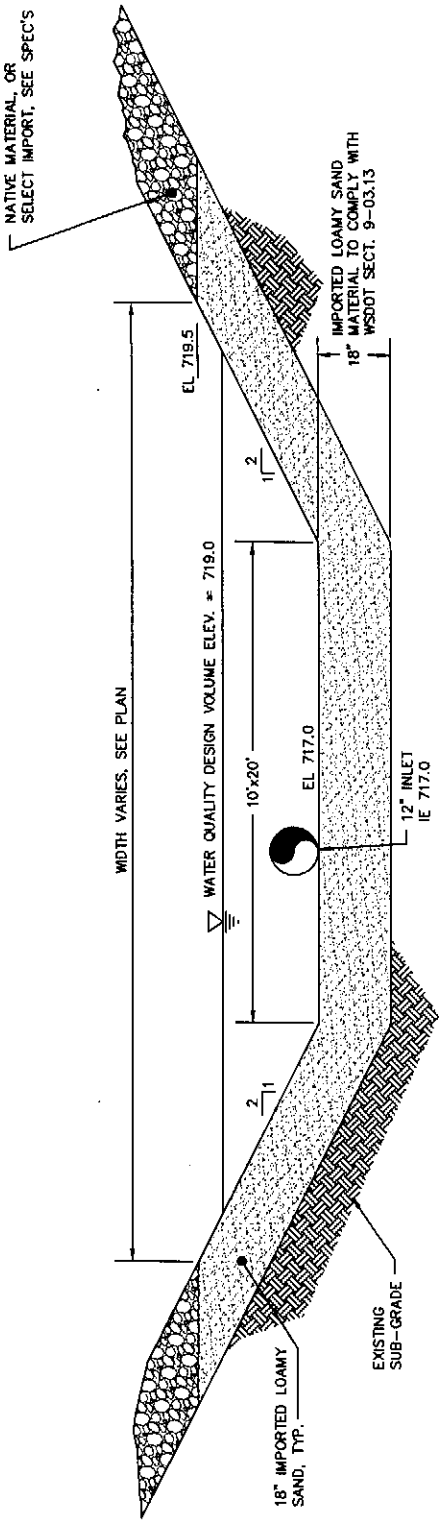
**CALL THREE BUSINESS  
DAYS BEFORE YOU DIG  
1-800-424-5555**







**STORMWATER INFILTRATION BASIN**  
SCALE 1"=10'



NOTE: THE INFILTRATION BASIN IS DESIGNED TO INFILTRATE THE 2-YEAR, 24-HOUR (WATER QUALITY) STORM EVENT. LARGER STORM EVENTS WILL OVERFLOW THROUGH THE OVERFLOW PIPE.

**INFILTRATION BASIN TYP. SECTION**  
NTS

JOB NO. 0523004-03  
DRAWING NO. C8  
SHEET OF

CITY OF ENTIAT  
2007 WASTEWATER TREATMENT  
FACILITIES IMPROVEMENTS  
STORM DRAINAGE SECTIONS & DETAILS

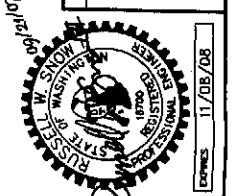


**HAMMOND COLLIER  
WADE LIVINGSTONE**  
SEATTLE (206) 632-2664  
WENATCHEE (309) 662-1762  
OMAK (509) 826-5861  
LAKEWOOD (253) 472-1992

DESIGNED BY RS  
DRAWN BY MR, DC  
CHECKED BY [Signature]  
APPROVED BY [Signature]  
DATE PRINTED 09/20/07  
SCALE AS SHOWN  
F.B. NO. 0523004-03

GENERAL NOTES

REVISIONS



11/06/08

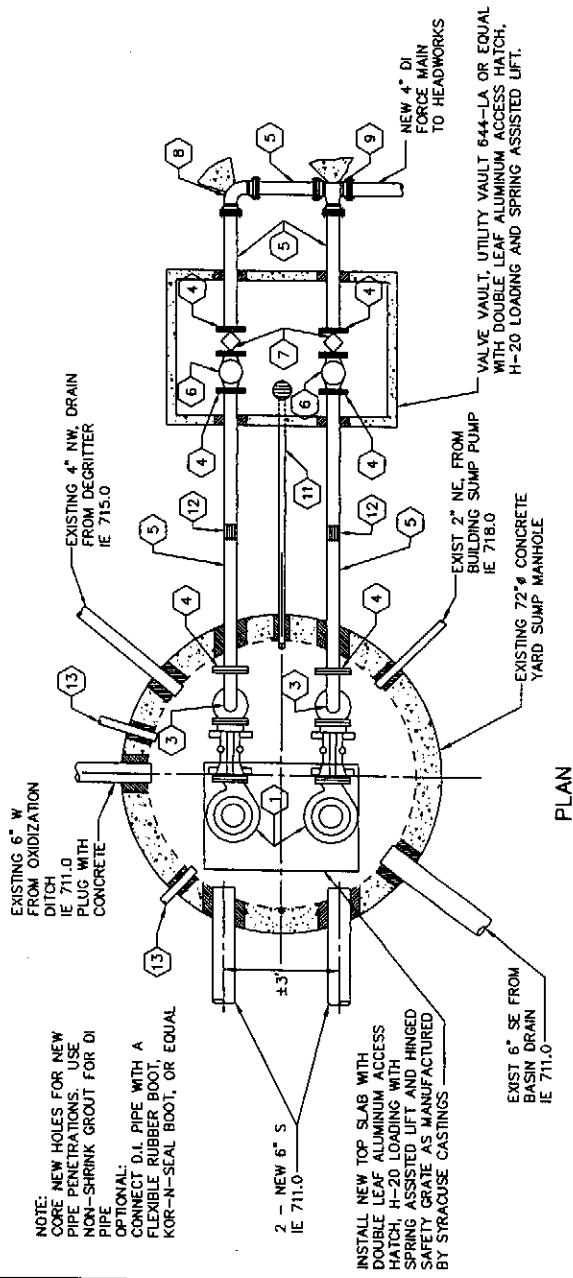
**KEYED NOTES**

- 1 2 EACH - NEW FLYGT 5 HP SUBMERSIBLE PUMPS MODEL NP-3102, 1750 RPM, 3 PH, 460V, 260 GPM @ 33' TDH
- 2 4" DI DISCHARGE SPOOL, LENGTH TO FIT (FL)
- 3 4" - 90° BEND (FL)
- 4 UNIFLANGE
- 5 4" DI SPOOL, LENGTH TO FIT (PE)
- 6 4" CHECK VALVE WITH OUTSIDE SPRING AND LEVER (FL) WITH EXPLOSION PROOF LIMIT SWITCH TO CONFIRM PUMP OPERATION, COORDINATE WITH ELECTRICAL
- 7 4" ECCENTRIC PLUG VALVE WITH WORM GEAR AND HANDWHEEL (FL)
- 8 4" - 90° BEND (RJ), CONCRETE BLOCKING
- 9 4" TEE (RJ), CONCRETE BLOCKING
- 10 NOT USED
- 11 2" SCH 80 PVC DRAIN PIPE, LENGTH TO FIT
- 12 4" DRESSER STYLE COUPLING (RJ)
- 13 EXISTING 2 1/2" 6.I.P., CUT OFF AT EDGE MANHOLE AND PLUG WITH CONCRETE

**PUMP CONTROL SCHEDULE & ALARM LEVELS**

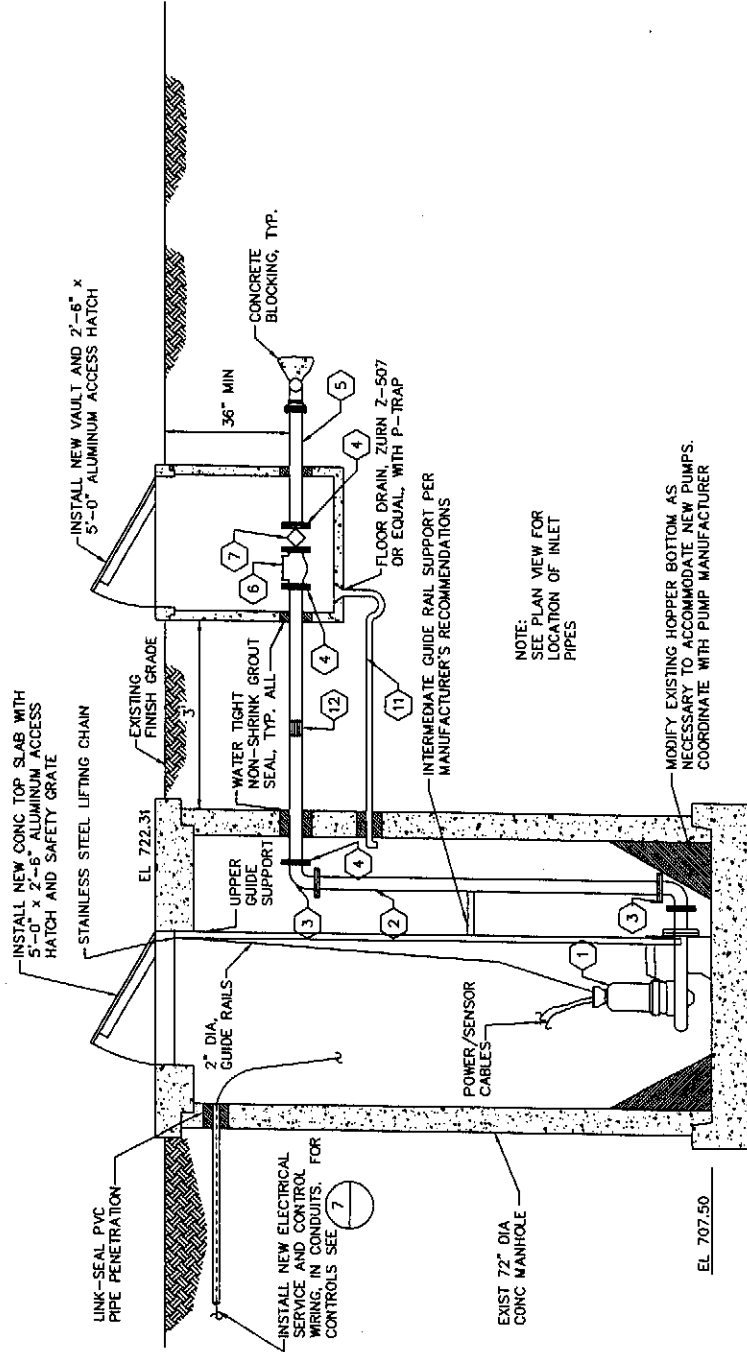
FUNCTION	ELEVATION
HIGH WATER ALARM (FLOAT)	712.00
HIGH WATER ALARM	712.00
LAG START	711.00
LAG START	710.50
LEAD ALG OFF	709.50
LOW WATER ALARM	709.00
LOW - LOW WATER ALARM (FLOAT)	708.50

NOTE: LIQUID LEVEL CONTROLLER TO BE A PRESSURE TRANSDUCER



**NOTE:**

REMOVE AND REPLACE EXISTING TOP SLAB AND HATCH WITH NEW. ALL EXISTING MECHANICAL, INCLUDING PUMPS, PIPING, VALVES AND APPURTENANCES ARE TO BE REMOVED AND DISPOSED OF OFF-SITE, AND REPLACED WITH ALL NEW FACILITIES (EXCEPT 72" MH) PER DETAILS THIS SHEET.



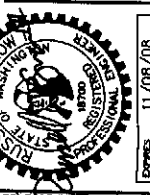
**ELEVATION**

**YARD SUMP - PUMP STATION MODIFICATIONS**

DESIGNED BY	RS
DRAWN BY	MR. DG
CHECKED BY	<i>[Signature]</i>
APPROVED BY	
DATE PRINTED	05/20/07
SCALE	AS SHOWN
F.B. NO.	

**GENERAL NOTES**

**REVISIONS**



**HAMMOND COLLIER  
WADE LIVINGSTONE**

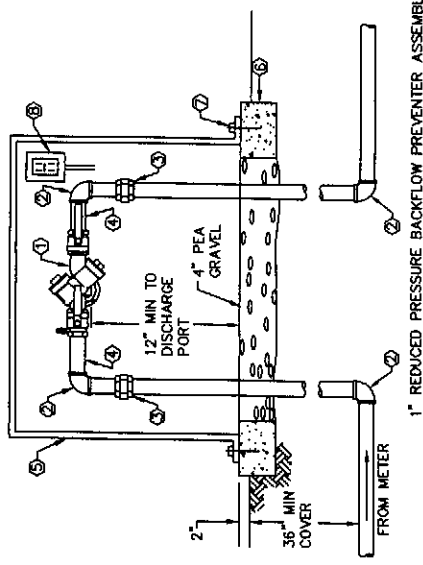
SEATTLE (206) 632-2664  
WENATCHEE (509) 662-1762  
OMAK (509) 826-5861  
LAKEWOOD (253) 472-1992

CITY OF ENTIAI  
2007 WASTEWATER TREATMENT  
FACILITIES IMPROVEMENTS

YARD SUMP PUMP STATION MODIFICATIONS & IMPROVEMENTS

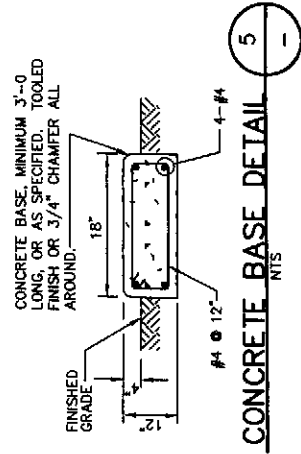
CALL THREE BUSINESS  
DAYS BEFORE YOU DIG  
1-800-424-5555

JOB NO.	0523004-03
DRAWING NO.	C9
SHEET	OF

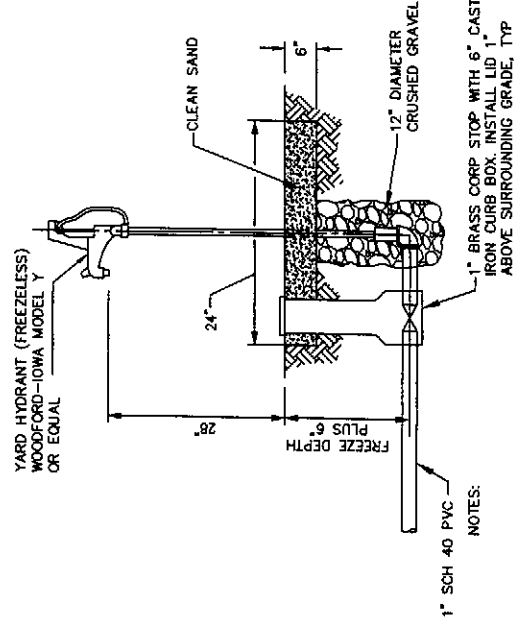


- LEGEND**
- UL-FM LISTED REDUCED PRESSURE BACKFLOW PREVENTER ASSEMBLY WITH ISOLATION VALVES AND TEST COCKS. FEBCO MODEL 825Y OR EQUAL. VALVE MUST BE ON LIST OF APPROVED BACKFLOW PREVENTION ASSEMBLIES PREPARED BY THE WASHINGTON STATE DEPARTMENT OF HEALTH DRINKING WATER PROGRAM.
  - 90° BEND, THREADED BRASS
  - UNION, THREADED BRASS
  - SCHEDULE 80 RIGID COPPER PIPE
  - INSULATED FIBERGLASS ENCLOSURE WITH HEAT TRACE AND HINGED LOCKABLE LID WHICH EXPOSES TOP AND FRONT OF RPBPA ASSEMBLY. SHALL BE EQUIPPED WITH A SCREENED DRAINAGE PORT AT THE BASE AND FLEXIBLE FLAPS TO PREVENT DRAFTS. HOT-BOX MODEL #1.5 - 33"W x 21"D x 23"H MIN. INSIDE DIMENSIONS.
  - 6" WIDE X 4" HIGH CAST-IN-PLACE CONCRETE FOOTING AROUND BASE OF ENCLOSURE.
  - STAINLESS STEEL ANCHOR BOLTS, SIZE AND NUMBER AS RECOMMENDED BY ENCLOSURE MANUFACTURER.
  - 120 VOLT, SINGLE PHASE, 15 AMP GROUND FAULT INTERRUPTING RECEPTACLE, ILL. STANDARD 843, NEMA 1-3P. POWER SERVICE SHALL BE INSTALLED IN ACCORDANCE WITH THE NATIONAL ELECTRICAL CODE AND CITY OF ENTIAT ORDINANCES. MOUNT RECEPTACLE AT TOP OF THE BACK WALL OF ENCLOSURE.
- NOTES:**
- ALL PIPE AND FITTINGS SHALL BE SAME SIZE AS RPBPA VALVE.
  - RPBPA ASSEMBLY SHALL BE INSTALLED WITH TEST COCKS TOWARDS FRONT OF ENCLOSURE (FOR OUTDOOR INSTALLATIONS).
  - RPBPA ASSEMBLY SHALL BE CERTIFIED BY CITY UPON INSTALLATION AND RECEIVE ANNUAL RECERTIFICATIONS.

**REDUCED PRESSURE BACKFLOW PREVENTER** 1  
NTS C3

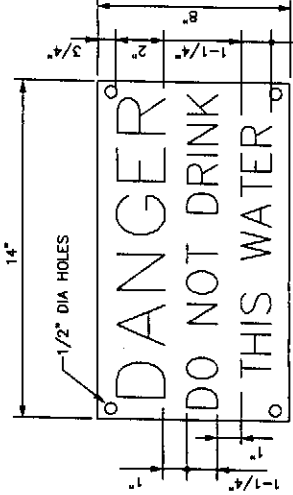


**CONCRETE BASE DETAIL** 5  
NTS -



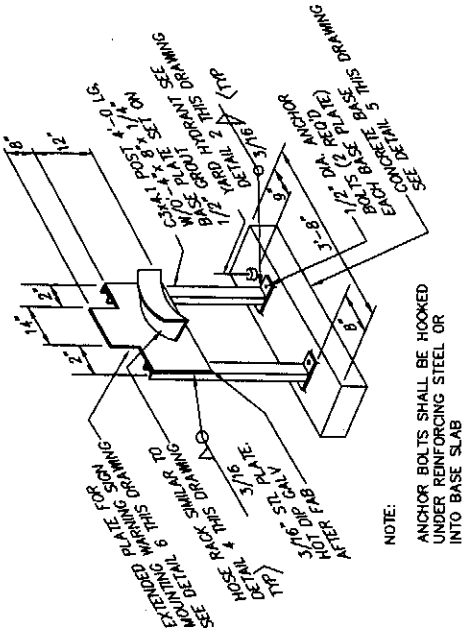
- NOTES:**
- USE POST MOUNTED HOSE RACK UTILITY STATION, SEE 3 C10
  - FURNISH SIX (6) EACH, 1-INCH X 50 FT. HOSE WITH QUICK DISCONNECT AND NOZZLE; ONE FOR EACH YARD HYDRANT.
  - FOR INTERIOR OR ON ASPHALT/CONCRETE SURFACE INSTALL WITH CONC. BASE SEE 3 5 C10

**YARD HYDRANT** 2  
NTS VAR

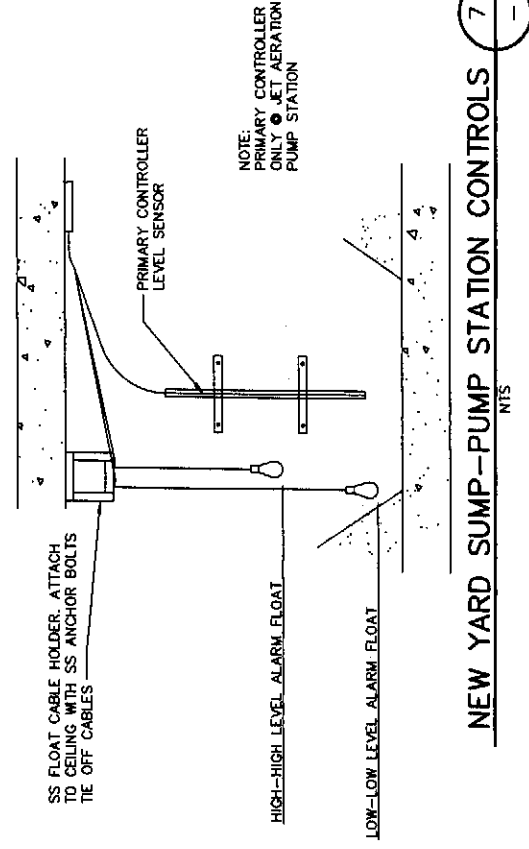


- NOTES:**
- WARNING SIGN SHALL BE BAKED ENAMEL ON STEEL PLATE WITH WHITE LETTERING ON RED BACKGROUND
  - LOCATE DIRECTLY ABOVE HOSE RACK. SEE DETAIL 3 THIS DRAWING

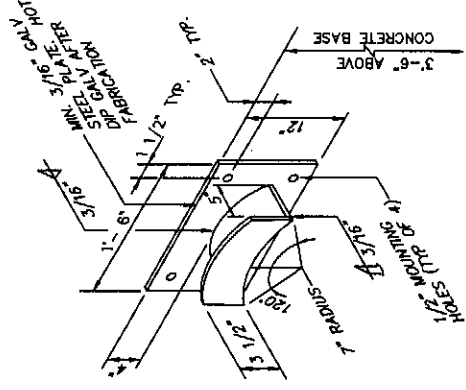
**WARNING SIGN DETAIL** 6  
NTS -



**POST MOUNTED UTILITY STATION** 3  
NTS -



**NEW YARD SUMP-PUMP STATION CONTROLS** 7  
NTS -



- NOTES:**
- HOSE RACK SHALL BE OF ALL WELDED CONSTRUCTION. MATERIAL SHALL BE MINIMUM OF 3/16 INCH THICK STEEL PLATE, HOT-DIP GALVANIZED AFTER FABRICATION.
  - ALL FASTENERS AND MOUNTING HARDWARE SHALL BE HOT-DIP GALVANIZED.
  - A WARNING SIGN SHALL BE PROVIDED AT THE UTILITY STATION, SEE 6 C10

**HOSE RACK DETAIL** 4  
NTS -

GENERAL NOTES

DESIGNED BY	RS
DRAWN BY	MR. DG
CHECKED BY	[Signature]
APPROVED BY	[Signature]
DATE PRINTED	09/20/07
SCALE	AS SHOWN
F.B. NO.	

REVISIONS

NO.	DESCRIPTION

CITY OF ENTIAT  
2007 WASTEWATER TREATMENT FACILITIES IMPROVEMENTS

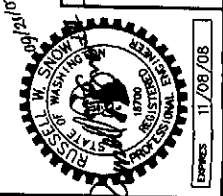
MISCELLANEOUS SITE DETAILS

JOB NO.	0523004-04
DRAWING NO.	C10
SHEET	OF

**HAMMOND COLLIER WADE LIVINGSTONE**

SEATTLE (206) 632-2664  
WENATCHEE (509) 662-1762  
OMAK (509) 826-3861  
LAKEWOOD (253) 472-1992

CALL THREE BUSINESS DAYS BEFORE YOU DIG  
1-800-424-5555

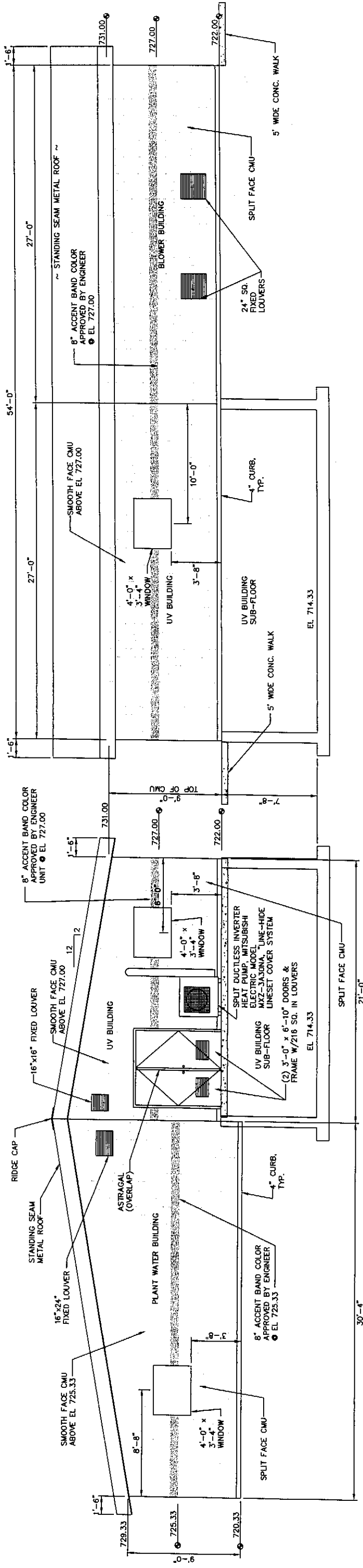


EXPRESSES 11/08/08



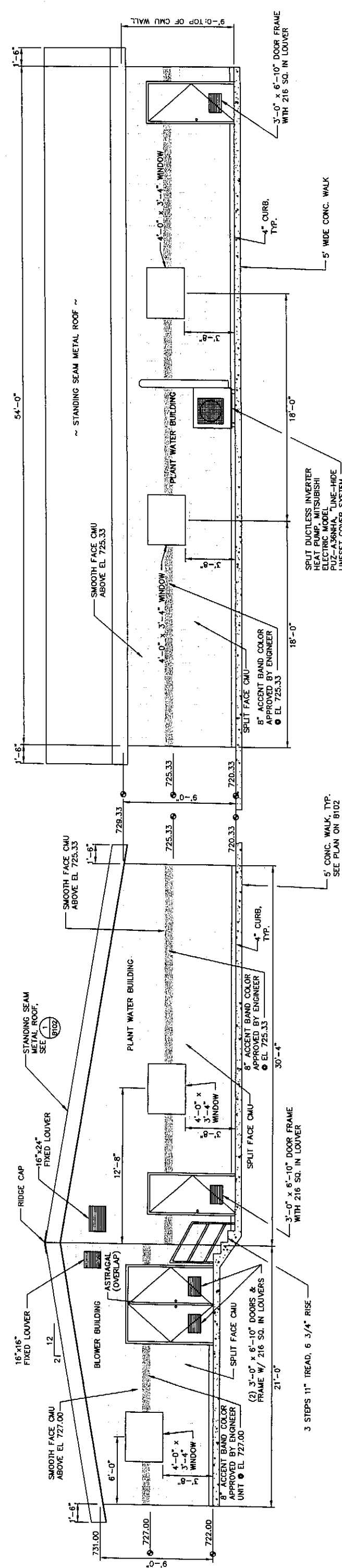






**WEST ELEVATION**  
SCALE 1/4"=1'-0"

NOTE:  
CONTRACTOR TO SUBMIT  
COLOR SAMPLES OF CMU TO  
ENGINEER FOR APPROVAL.



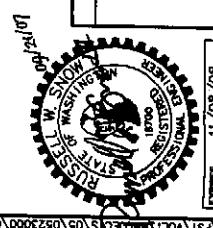
**EAST ELEVATION**  
SCALE 1/4"=1'-0"

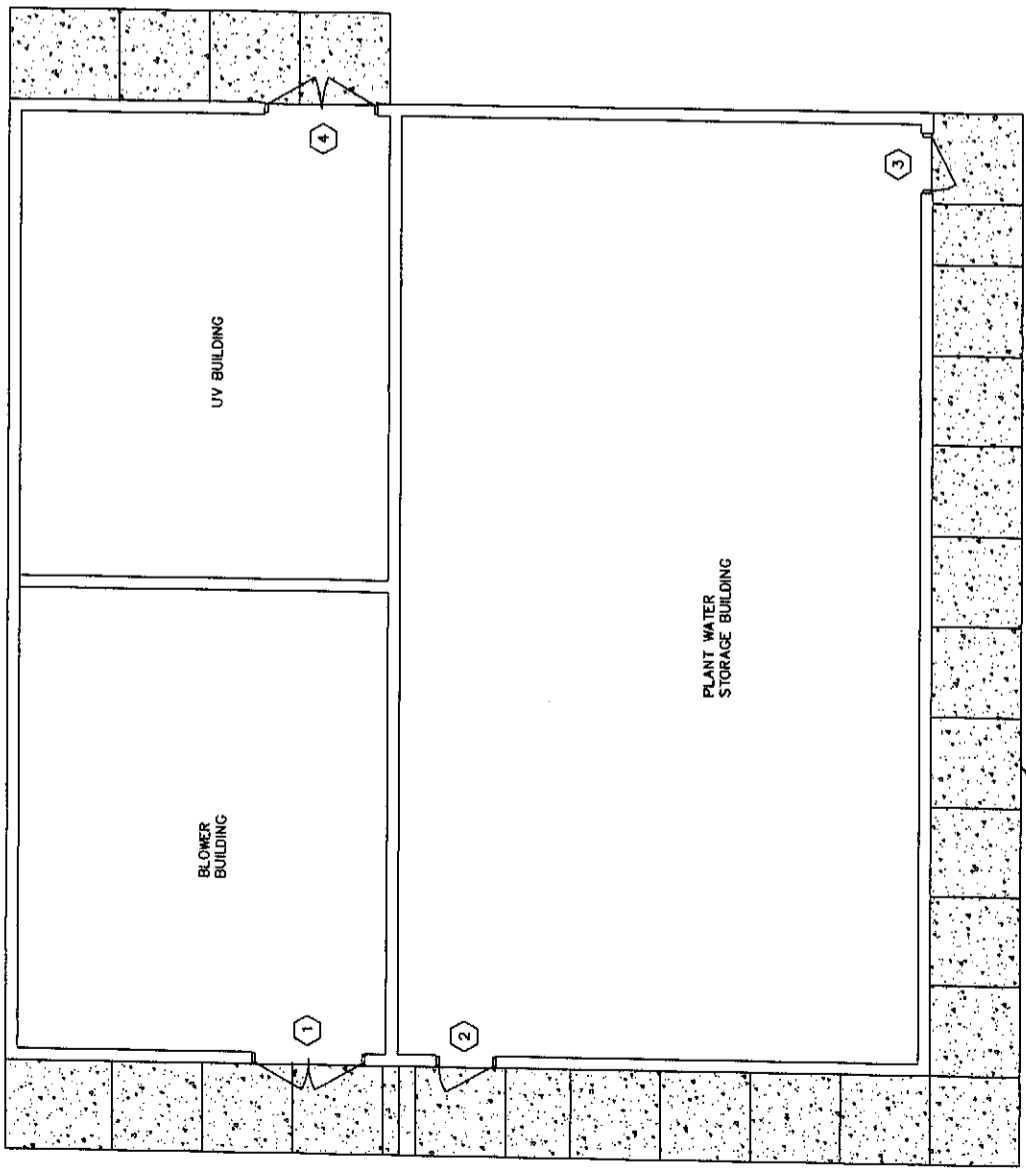
**NORTH ELEVATION**  
SCALE 1/4"=1'-0"

**SOUTH ELEVATION**  
SCALE 1/4"=1'-0"

	CITY OF ENTIAI 2007 WASTEWATER TREATMENT FACILITIES IMPROVEMENTS	JOB NO. 0523004-03
	HAMMOND COLLIER WADE LIVINGSTONE	DRAWING NO. B101
SEATTLE (206) 632-2664 OMAHA (509) 936-3861 WENATCHEE (509) 662-1762	BUILDING ELEVATIONS	SHEET OF
DESIGNED BY DRAWN BY CHECKED BY APPROVED BY DATE PRINTED SCALE F.S. NO.	GENERAL NOTES	REVISIONS
09/20/07 AS SHOWN	1/4"=1'-0"	11/08/08

CALL THREE BUSINESS  
DAYS BEFORE YOU DIG  
1-800-424-5555





### FINISH SCHEDULE

ROOM	FLOOR	CEILING	INTERIOR WALLS	EXTERIOR WALLS
ALL	CURE AND SEAL SEE SPEC'S	WOOD RAFTERS COATED PER DWG. 8103	PAINTED CMU	COATED CMU SEE SPEC'S

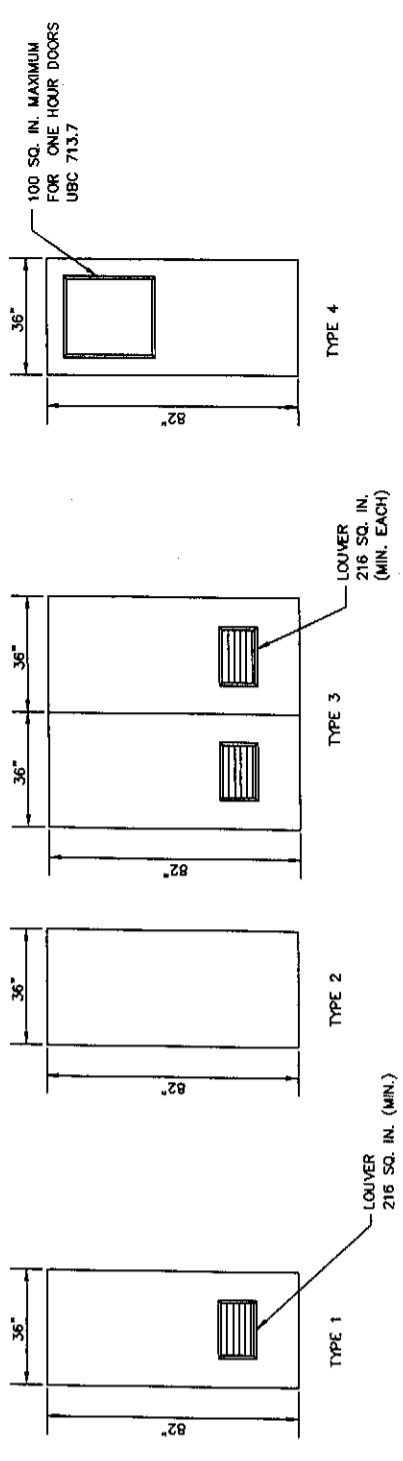
### HARDWARE CODES

A - WEATHERSTRIP (ALL SIDES)  
 B - THRESHOLD  
 C - LEVER LATCH W/LOCK  
 D - DOOR STOP/HOOK (FLOOR MOUNT)  
 E - INTERIOR PANIC BAR OPENER  
 F - DOOR CLOSER

### DOOR SCHEDULE

NO.	TYPE	HARDWARE	QTY	SIZE	MATERIAL	LETTERING ON DOOR	ADDITIONAL SIGNS
1	3	ABC	1	6'-0" X 6'-10"	STEEL	BLOWERS	NONE
2,3	1	ABCD	1	3'-0" X 6'-10"	STEEL	PLANT WATER	NONE
4	3	ABCF	1	6'-0" X 6'-10"	STEEL	UV SYSTEM	NONE

NOTES:  
 ALL LOUVERS MOUNTED ON EXTERIOR DOORS TO BE VANDAL RESISTANT AND SIGHT PROOF.  
 ALL DOORS SHALL HAVE A MINIMUM FIRE RATING OF 1 HOUR, WITH ASTRAGAL AND COORDINATOR, SMOKE SEALS, MAXIMUM 100 SQ. IN. GLASS.



CALL THREE BUSINESS DAYS BEFORE YOU DIG  
 1-800-424-5555

**HAMMOND COLLIER WADE LIVINGSTONE**

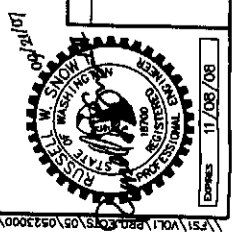
CITY OF ENTIAI  
 2007 WASTEWATER TREATMENT FACILITIES IMPROVEMENTS

DOOR SCHEDULE

DESIGNED BY: RS  
 DRAWN BY: MR. DC  
 CHECKED BY: [Signature]  
 APPROVED BY: [Signature]  
 DATE PRINTED: 09/20/07  
 SCALE: AS SHOWN  
 F.B. NO.: 0523004-03

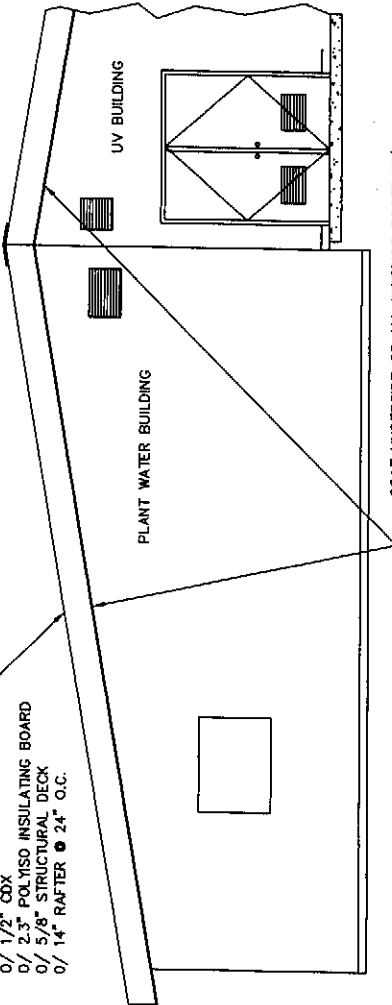
SEATTLE (206) 632-2664  
 WENATCHEE (509) 662-1762  
 OMAHA (509) 626-3861  
 LAKEWOOD (253) 472-1992

JOB NO. 0523004-03  
 DRAWING NO. B102  
 SHEET OF



\\FS1\Vol1\penn\03\08\0523004-03\DWG\B102.DWG

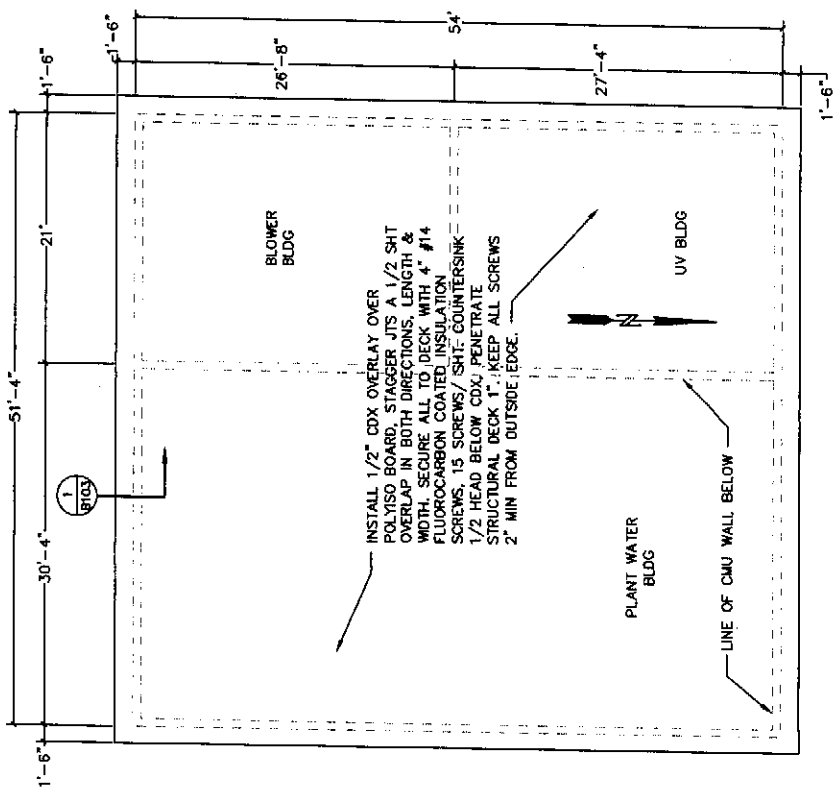
TYP. ROOF CONSTRUCTION  
 STANDING SEAM MET. ROOF  
 0/ 30# BLDG. FELT  
 0/ 1/2" CDX  
 0/ 2.3" POLYISO INSULATING BOARD  
 0/ 5/8" STRUCTURAL DECK  
 0/ 14" RAFTER @ 24" O.C.



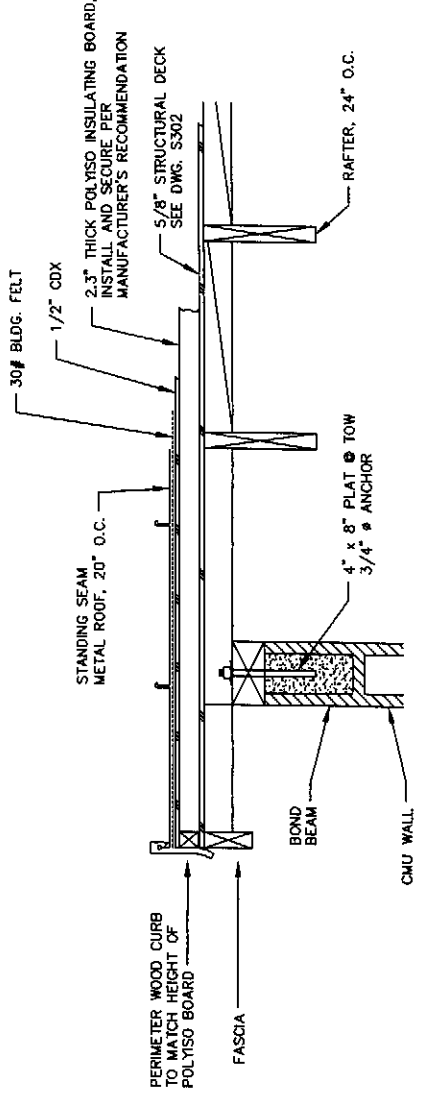
COAT UNDERSIDE OF ALL INTERIOR ROOFS W/  
 PRIMER: 1 COAT, TREMEC SERIES 151-1051 ELASTO-GRIP, 2 MILS  
 FINISH: 2 COATS, TREMEC SERIES 156 ENVIRO-CRETE, 6 MILS EACH

- NOTES:
1. SURFACE PREP - SURFACE TO BE CLEAN, DRY AND FREE OF CONTAMINANTS.
  2. CAULK ALL TRANSITIONS FROM RAFTERS TO ROOF STRUCTURAL DECK.

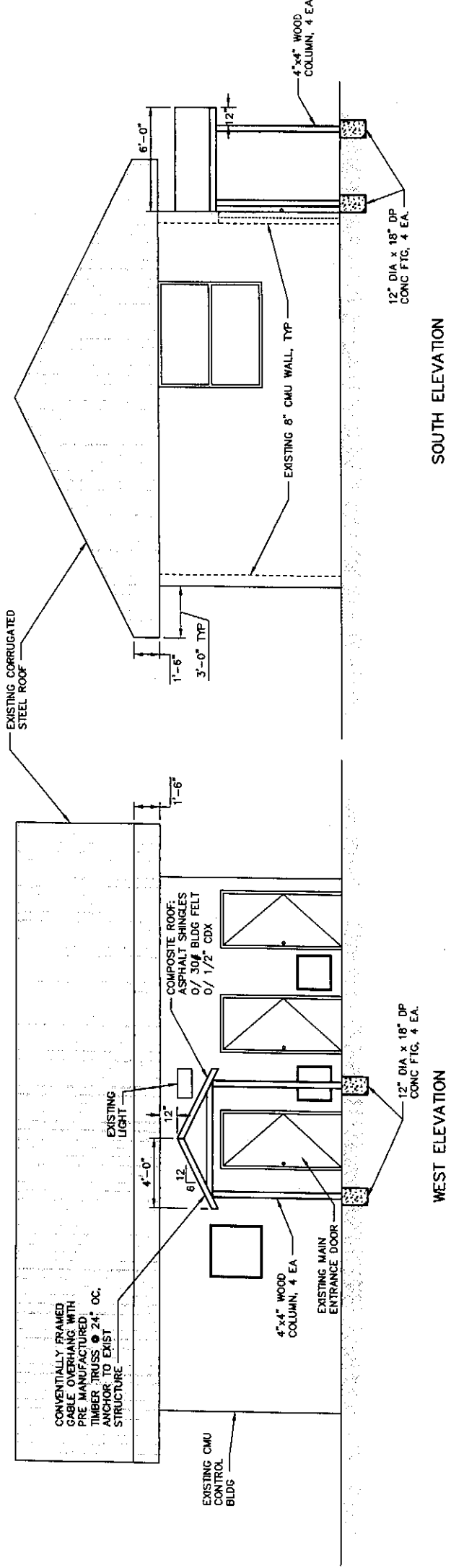
**BUILDING SECTION**  
 SCALE 1/4"=1'-0"



**SUB-ROOFING INSTALLATION DETAILS**  
 SCALE 1/8"=1'-0"



**TYPICAL ROOF SECTION**  
 SCALE 1"=1'-0"  
 B103



**NEW GABLE OVERHANG INSTALLATION DETAIL**  
 SCALE 1/4"=1'-0"

CALL THREE BUSINESS  
 DAYS BEFORE YOU DIG  
 1-800-424-5555

JOB NO. 0523004-03  
 DRAWING NO. B103  
 SHEET OF

CITY OF ENTIAI  
 2007 WASTEWATER TREATMENT  
 FACILITIES IMPROVEMENTS  
 BUILDING ROOF SECTIONS & DETAILS

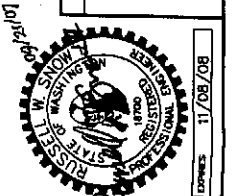


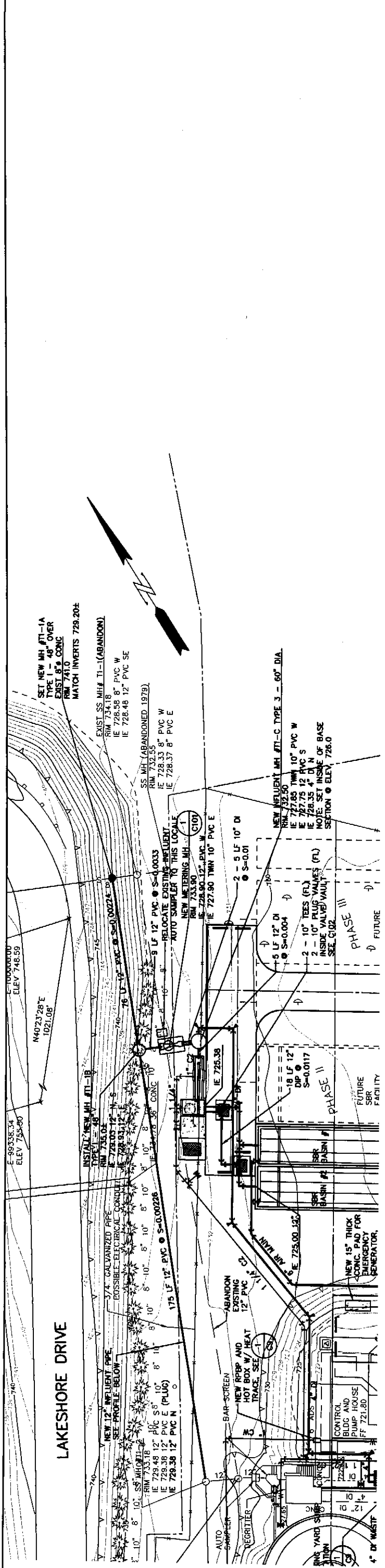
**HAMMOND COLLIER  
 WADE LIVINGSTONE**  
 SEATTLE (206) 632-2664  
 OMAHA (509) 662-1762  
 LAKESIDE (253) 472-1992

DESIGNED BY RS  
 DRAWN BY MR. DG  
 CHECKED BY JAW  
 DATE PRINTED 09/20/07  
 SCALE AS SHOWN  
 F.B. NO.

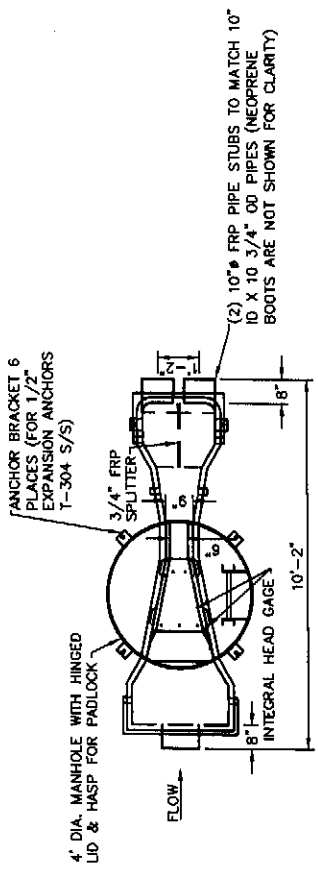
GENERAL NOTES  
 0/ = OVER

REVISIONS

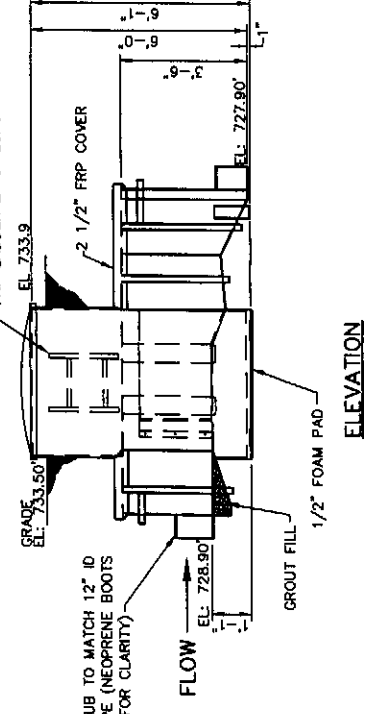




**PLAN**  
SCALE 1"=20'



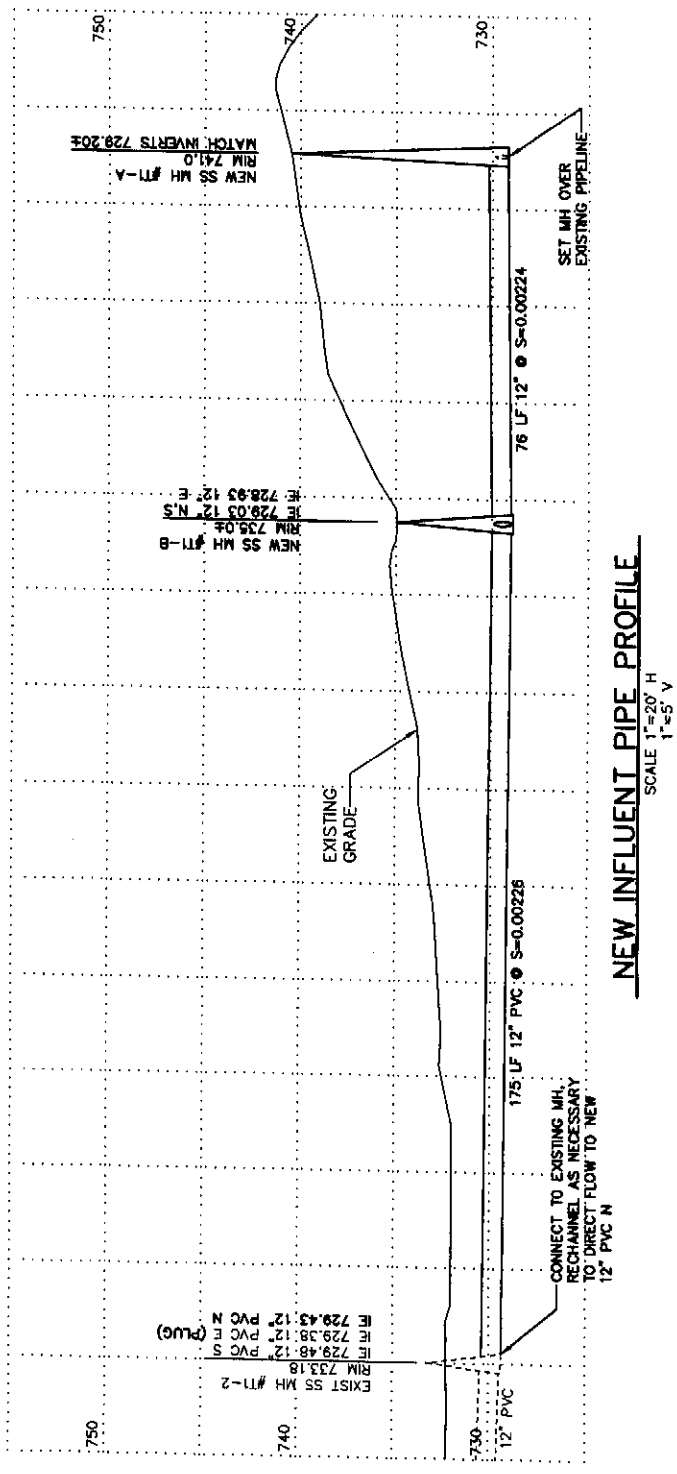
**PLAN**  
NOTE: LID IS NOT SHOWN THIS VIEW FOR CLARITY



**ELEVATION**

- NOTES:
1. MATERIAL IS FRP (FIBERGLASS REINFORCED POLYESTER).
  2. NEOPRENE BOOTS ARE SECURED WITH STAINLESS STEEL BANDS.
  3. HINGE, HASP, ANCHOR BRACKETS AND BOLTS ARE TYPE 304 S/S.
  4. THE MINIMUM MANHOLE BARREL THICKNESS IS 1/2".
  5. THE HEAD GAGE (CENTIMETERS & HUNDRETHS OF A FOOT) IS MOLDED INTO THE SIDE OF THE FLUME.

CONTRACTOR TO FILL MANHOLE WITH CONCRETE OR SAND COVERED WITH CONCRETE TO THE TOP OF THE FLUME



**NEW INFLUENT PIPE PROFILE**  
SCALE 1"=20' H  
1"=5' V

**NEW METERING MANHOLE** 1  
SCALE 3/8"=1'-0"

CALL THREE BUSINESS DAYS BEFORE YOU DIG  
1-800-424-5555

	CITY OF ENTIAI 2007 WASTEWATER TREATMENT FACILITIES IMPROVEMENTS	JOB NO. 0523004-03
	METERING MANHOLE AND INFLUENT PIPING PLAN AND PROFILE	DRAWING NO. C101
SEATTLE (206) 632-2664 OMAHA (509) 826-5861 WENATCHEE (509) 662-1762	LAKEMOOD (253) 472-1992	SHEET OF

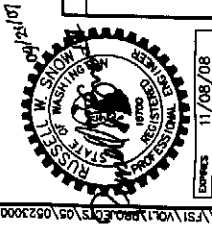
  

DESIGNED BY	RN
DRAWN BY	MR. DC
CHECKED BY	[Signature]
APPROVED BY	[Signature]
DATE PRINTED	09/20/07
SCALE	1"=1'-0"
SHEET NO.	

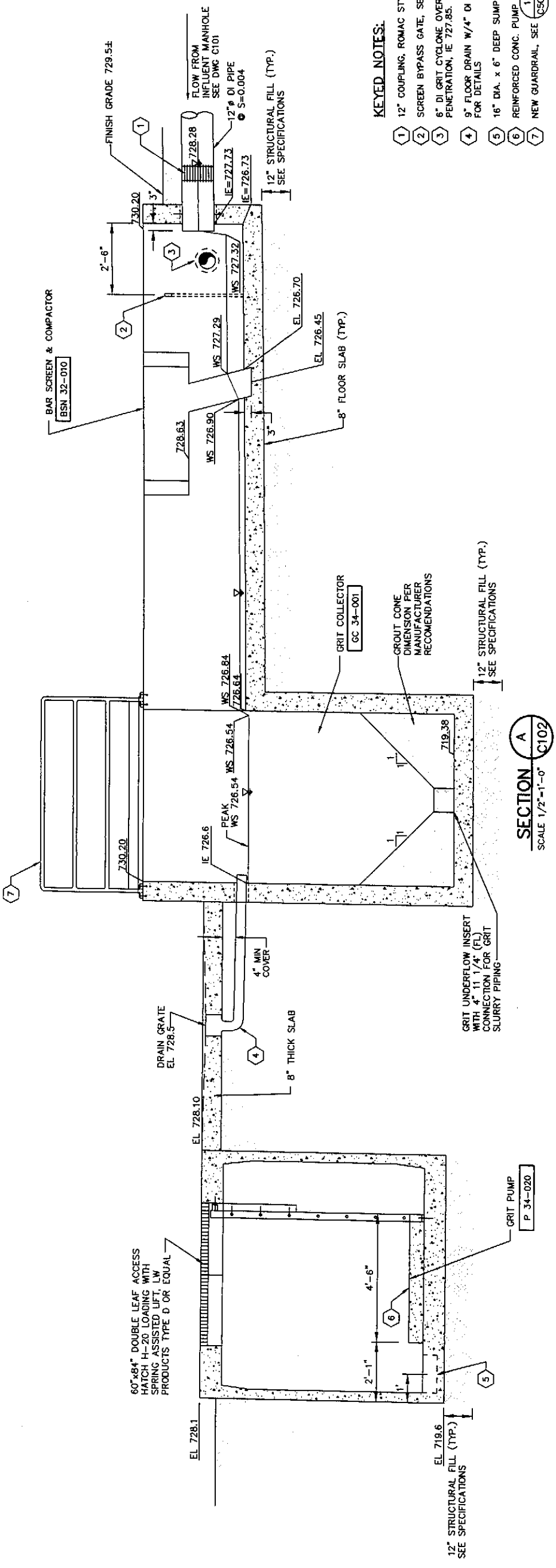
GENERAL NOTES

REVISIONS

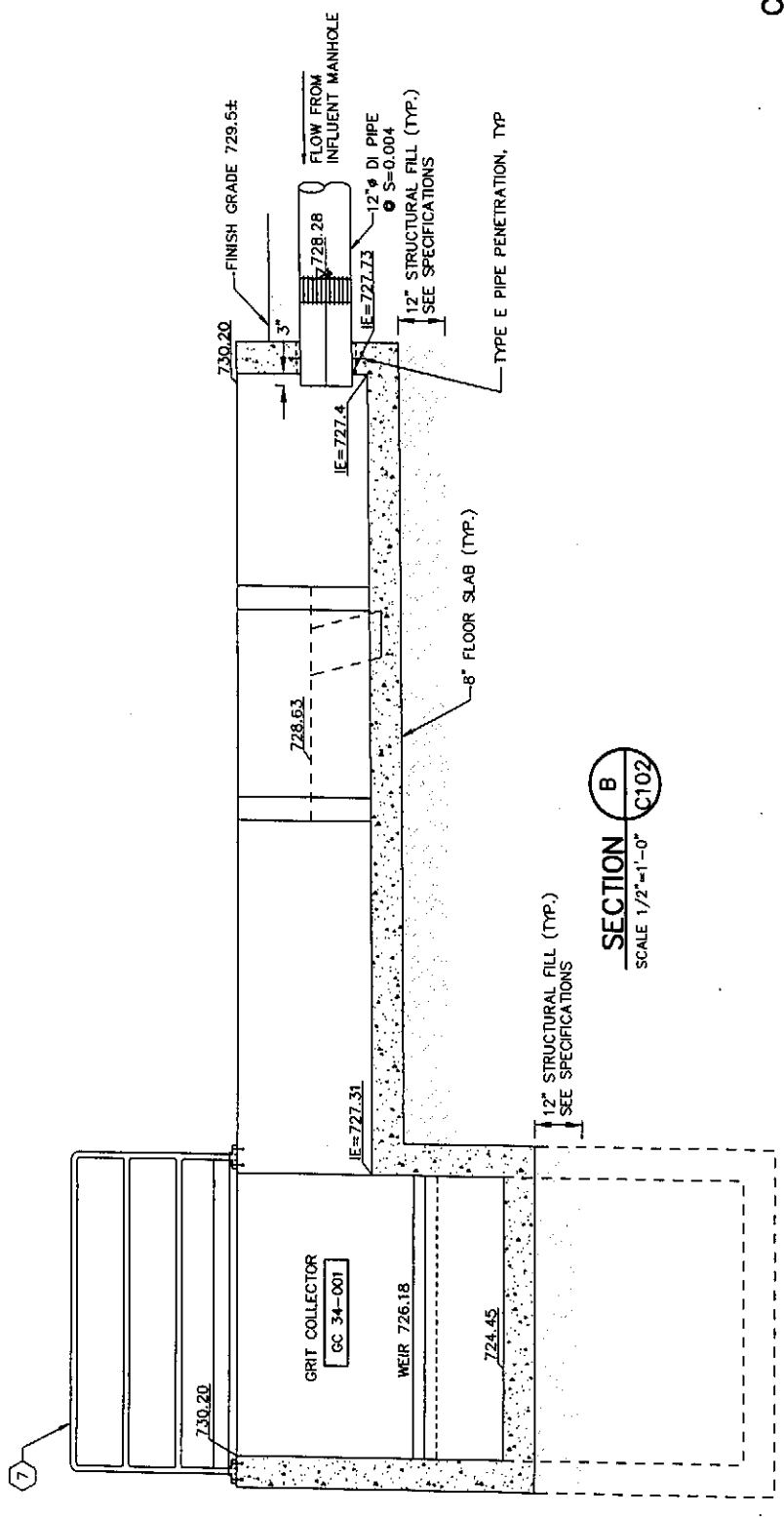


DATE: 11/08/08

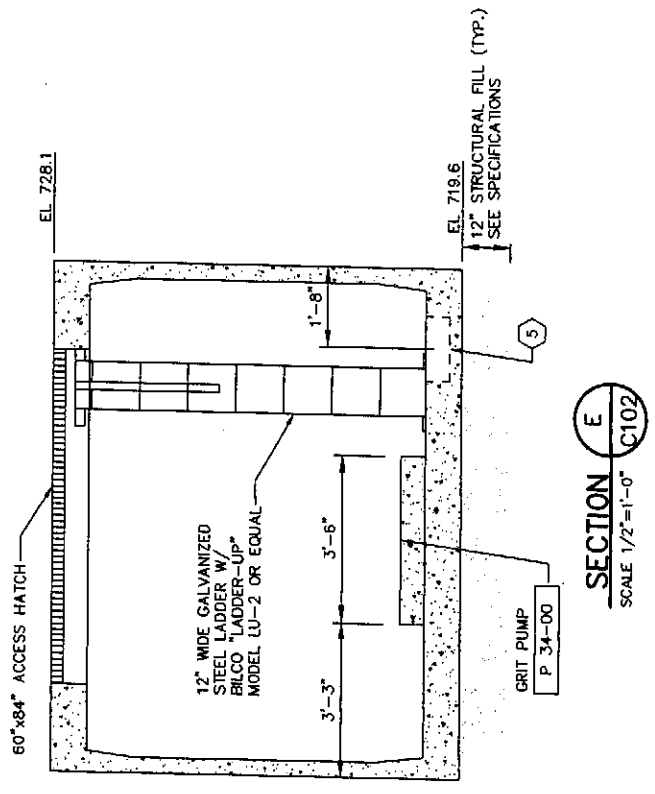




**SECTION A**  
SCALE 1/2"=1'-0"



**SECTION B**  
SCALE 1/2"=1'-0"  
C102



**SECTION E**  
SCALE 1/2"=1'-0"  
C102

**KEYED NOTES:**

- 1 12" COUPLING, ROMAC STYLE 501 OR EQUAL
- 2 SCREEN BYPASS GATE, SEE SPECIFICATIONS SL 32-001
- 3 6" DI GRIT CYCLONE OVERFLOW PIPE WITH TYPE E PENETRATION, IE 727.85. SEE DWG M101
- 4 9" FLOOR DRAIN W/4" DI PIPE AND FITTINGS, SEE DWG M102 FOR DETAILS
- 5 16" DIA. x 6' DEEP SUMP PUMP, SEE DWG M101
- 6 REINFORCED CONC. PUMP PAD, SEE DWG C102
- 7 NEW GUARDRAIL, SEE C502

**CALL THREE BUSINESS DAYS BEFORE YOU DIG**  
1-800-424-5555

DESIGNED BY: RN  
DRAWN BY: MR. DC  
CHECKED BY: [Signature]  
APPROVED BY: [Signature]  
DATE PLOTTED: 09/20/07  
SCALE: AS SHOWN  
SHEET NO.:

JOB NO. 0523004-03  
DRAWING NO. C103  
SHEET OF

**HAMMOND COLLIER  
WADE LIVINGSTONE**

SEATTLE (206) 632-2664  
WENATCHEE (509) 662-1762  
OMAK (509) 826-5861  
LAKEWOOD (253) 472-1992

CITY OF ENTIAI  
2007 WASTEWATER TREATMENT FACILITIES IMPROVEMENTS

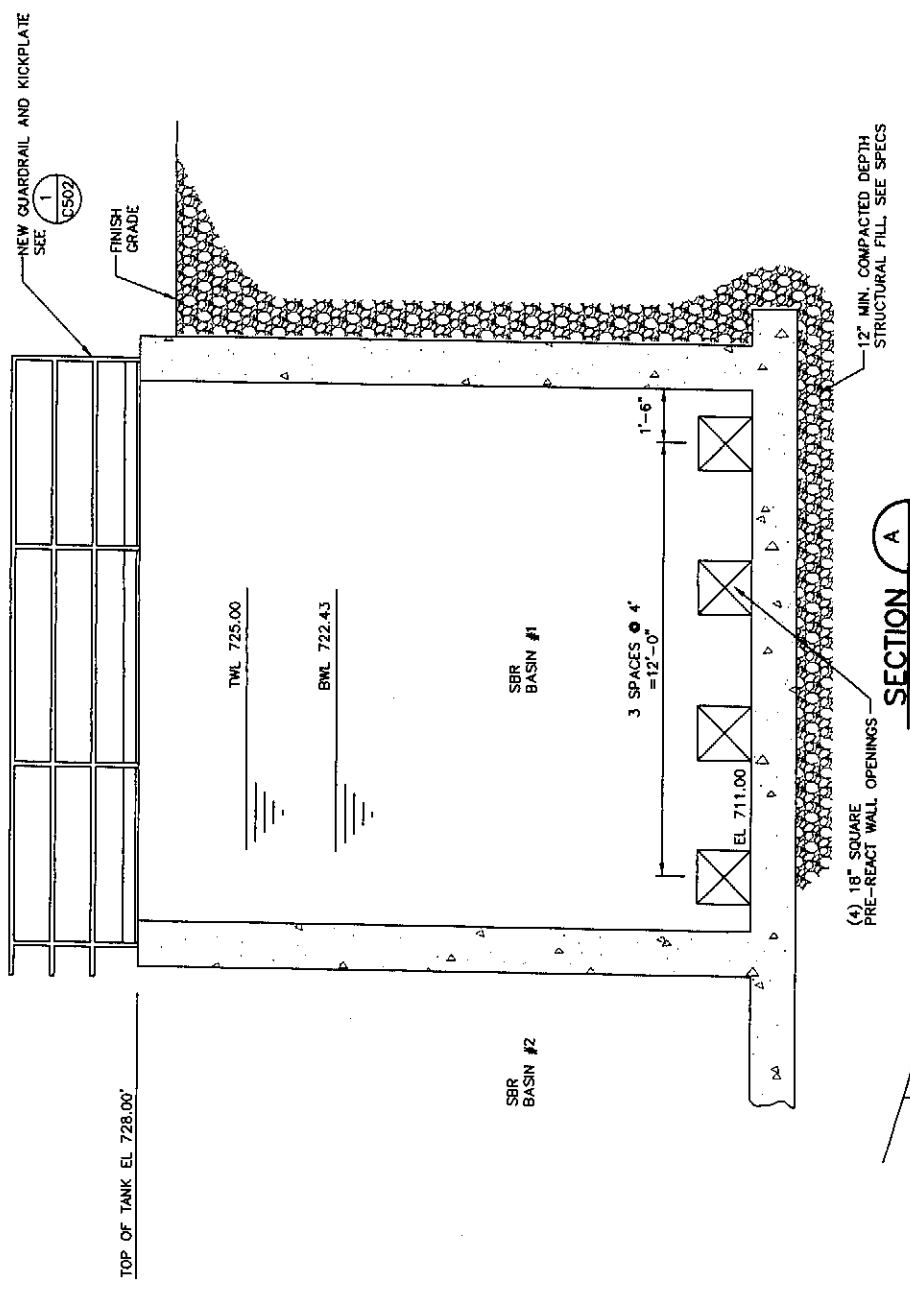
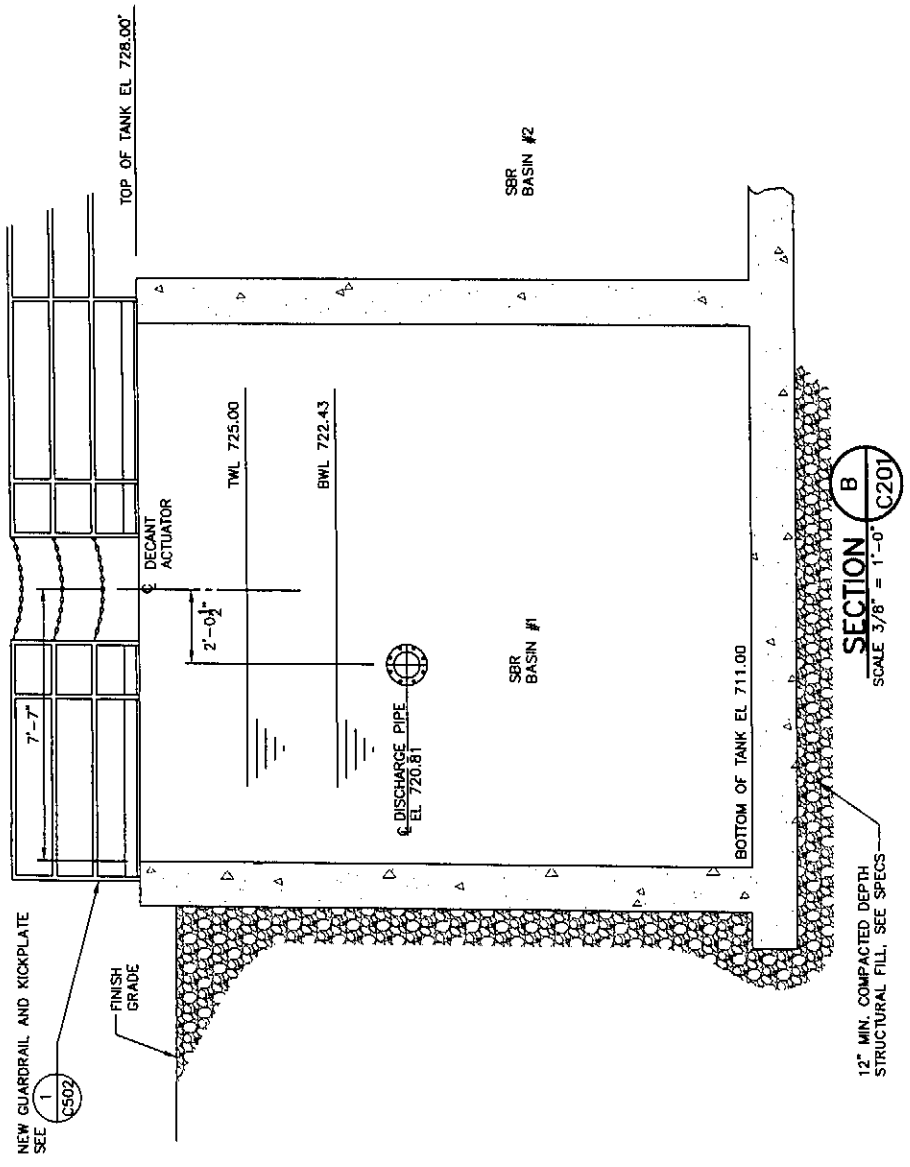
HEADWORKS SECTION & DETAILS

GENERAL NOTES

REVISIONS

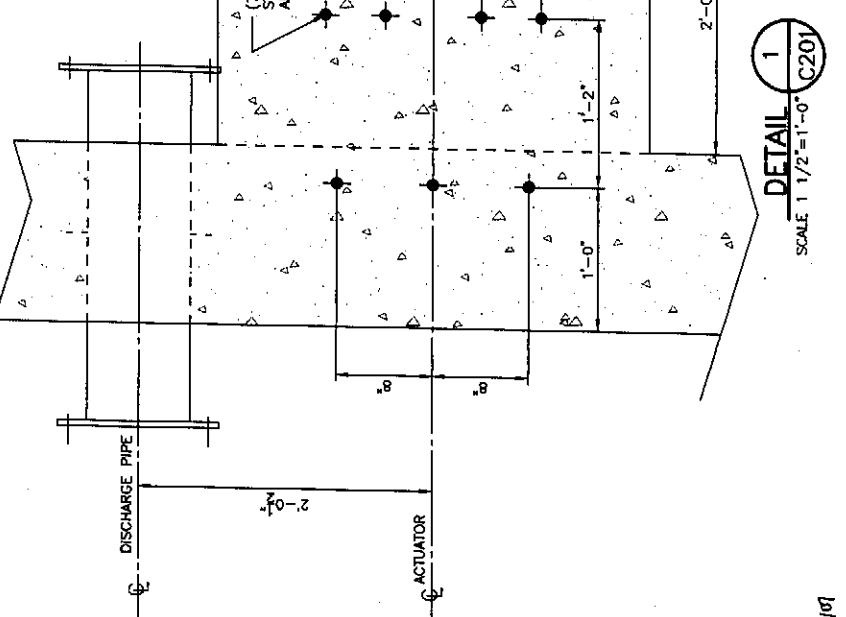
DATE: 11/09/08



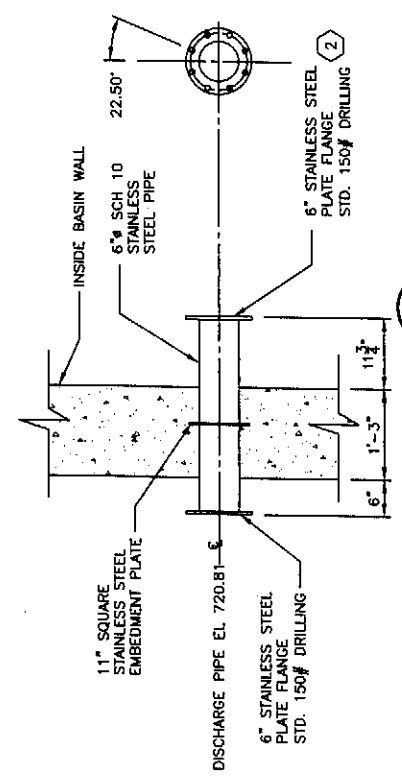


**SECTION A**  
SCALE 3/8" = 1'-0" C201

**SECTION B**  
SCALE 3/8" = 1'-0" C201




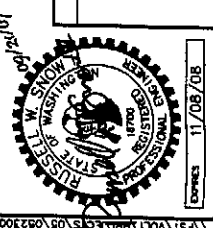
**DETAIL 1**  
SCALE 1 1/2" = 1'-0" C201



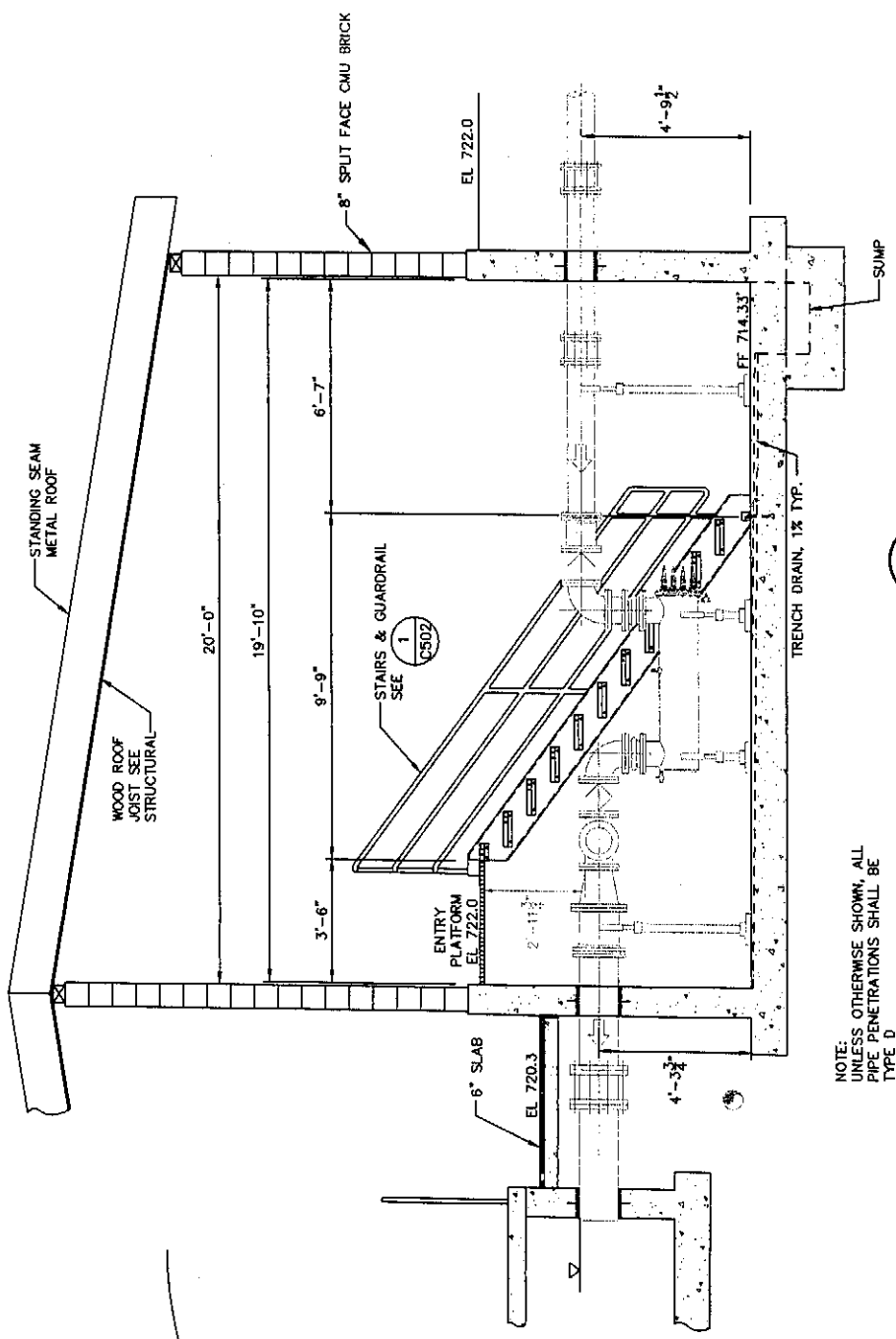
**SECTION C**  
SCALE 3/4" = 1'-0" C201

- NOTES:
- (1) ADHESIVE ANCHORS TO BE LOCATED AND INSTALLED AT ASSEMBLY WITH EQUIPMENT MANUFACTURER'S INSTRUCTIONS. SEE DRAWINGS M206 AND M207 FOR DECANTER INSTALLATION.
  - (2) DECANTER DISCHARGE PIPE PLATE FLANGE SHALL BE PLUMB.

 <p><b>HAMMOND COLLIER WADE LIVINGSTONE</b></p>	<p>CITY OF ENTIAI 2007 WASTEWATER TREATMENT FACILITIES IMPROVEMENTS</p>	<p>CALL THREE BUSINESS DAYS BEFORE YOU DIG 1-800-424-5555</p>	<p>JOB NO. 0523004-03 DRAWING NO. C202 SHEET 07</p>
<p>DESIGNED BY NS, RS DRAWN BY MR, DC CHECKED BY [Signature] APPROVED BY [Signature]</p>	<p>DATE PRINTED 09/20/07 SCALE AS SHOWN F.B. NO.</p>	<p>SEATTLE (206) 632-2664 WENATCHEE (509) 662-1762 OMAK (509) 826-5861 LAKEWOOD (253) 472-1992</p>	<p>SRR BASIN, SECTIONS AND DETAILS</p>
<p>GENERAL NOTES</p>			
<p>REVISIONS</p>			







**SECTION A**  
SCALE 3/8"=1'-0"  
C401

NOTE:  
UNLESS OTHERWISE SHOWN, ALL  
PIPE PENETRATIONS SHALL BE  
TYPE D

CALL THREE BUSINESS  
DAYS BEFORE YOU DIG  
1-800-424-5555

JOB NO. 0523004-03  
DRAWING NO. C401  
SHEET 0F

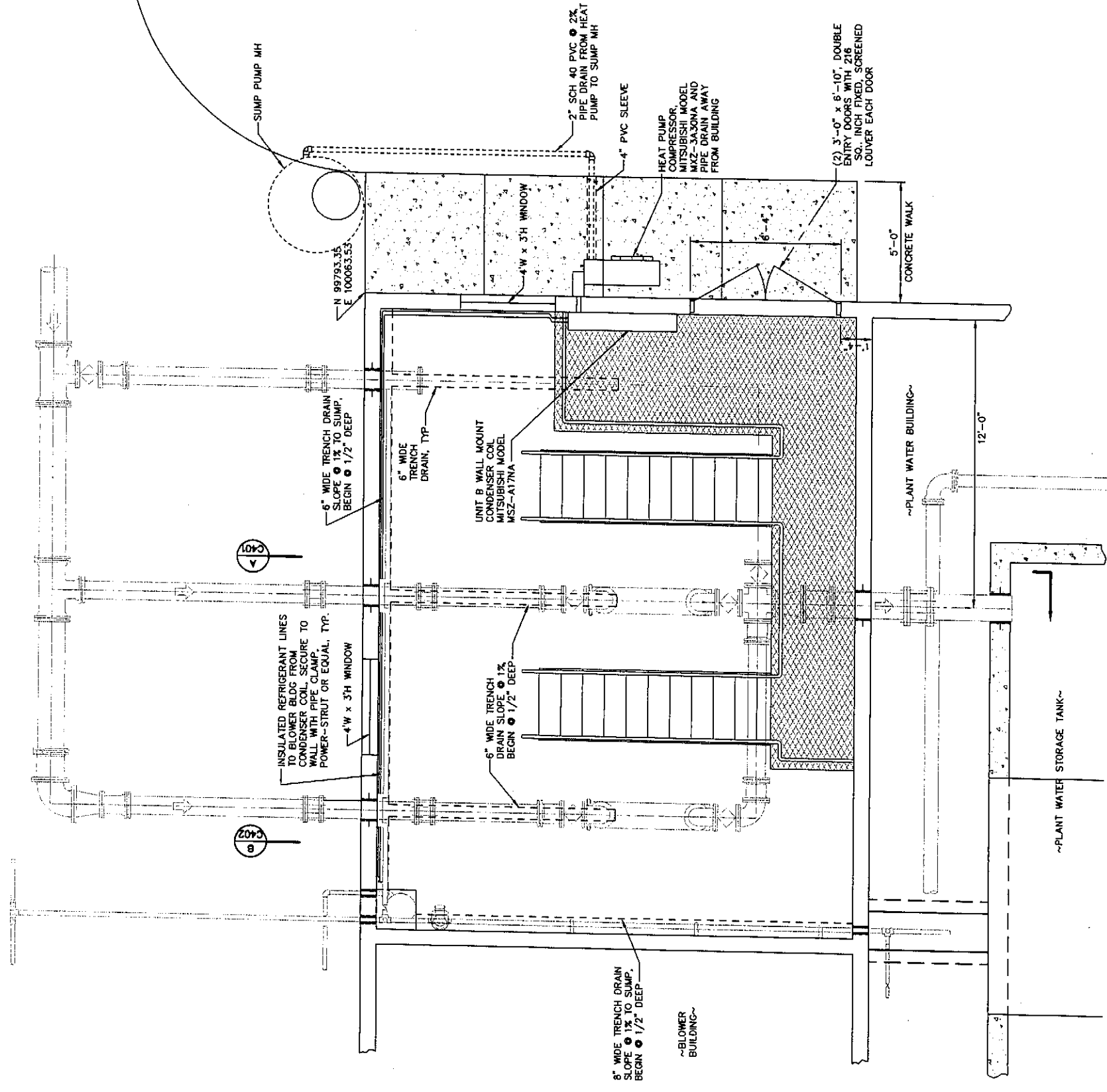
CITY OF ENTIAI  
2007 WASTEWATER TREATMENT  
FACILITIES IMPROVEMENTS



**HAMMOND COLLIER  
WADE LIVINGSTONE**

SEATTLE (206) 633-2664  
WENATCHEE (509) 662-1762  
OMAK (509) 835-8861  
LAKEWOOD (253) 472-1992

UV DISINFECTION SYSTEM BUILDING PLAN AND SECTION

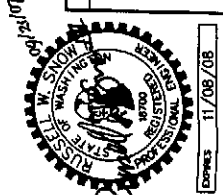


**FLOOR PLAN**  
SCALE 3/8"=1'-0"

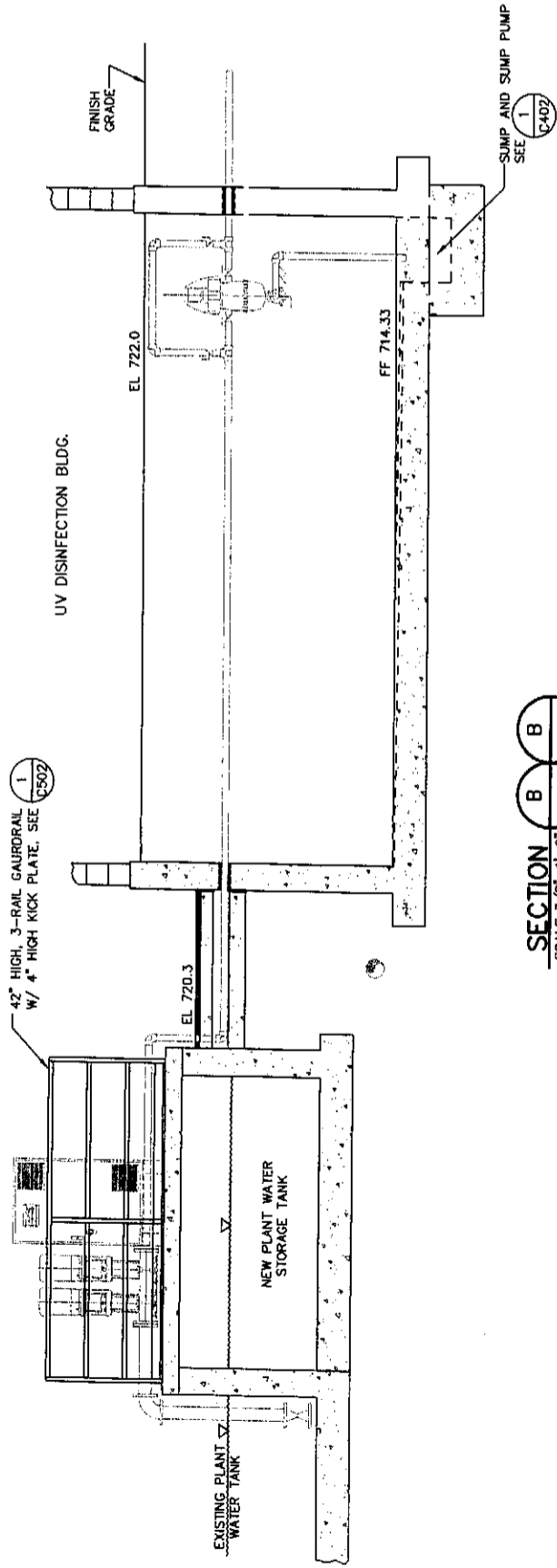
DESIGNED BY	NS, RS
DRAWN BY	MR. DC
CHECKED BY	<i>[Signature]</i>
APPROVED BY	
DATE PRINTED	09/20/07
SCALE	AS SHOWN
F.B. NO.	

GENERAL NOTES

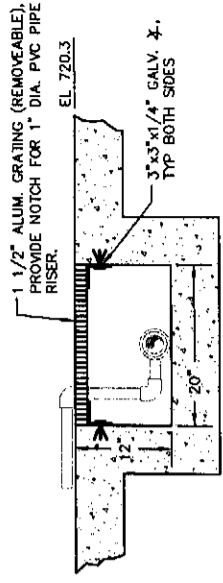
REVISIONS



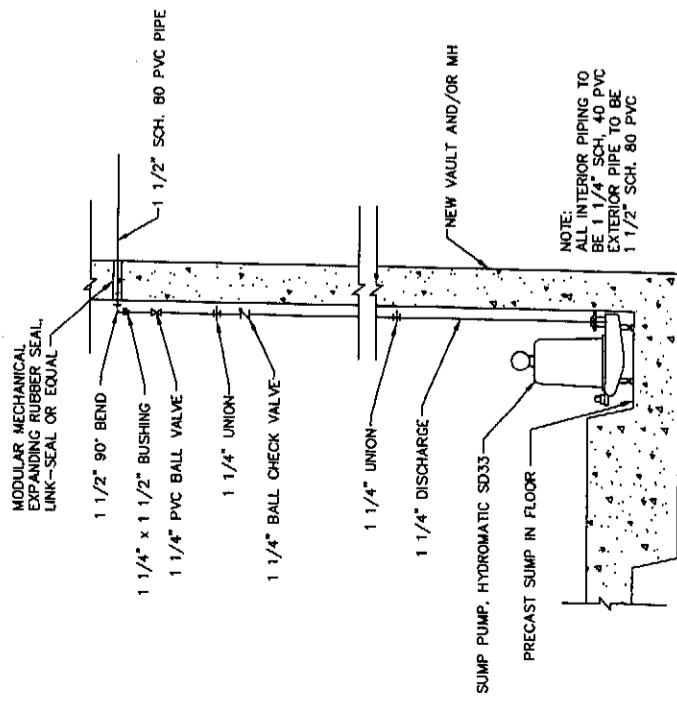
\\FS1\VD1\lbrn\p05\0523000\0523004-03\DWG\C401.DWG



**SECTION B B**  
SCALE 3/8"=1'-0"  
C-401 C-501



**SECTION D D**  
1"=1'-0"  
C-501

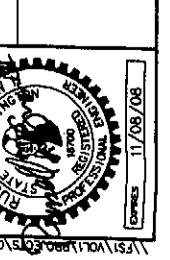


**TYPICAL SUMP PUMP INSTALLATION 1**  
NO SCALE  
VAR

DESIGNED BY NS, RS  
DRAWN BY MR, DC  
CHECKED BY *[Signature]*  
APPROVED BY *[Signature]*  
DATE PRINTED 09/20/07  
SCALE AS SHOWN  
SHEET NO.

GENERAL NOTES

REVISIONS



**HAMMOND COLLIER**  
**WADE LIVINGSTONE**

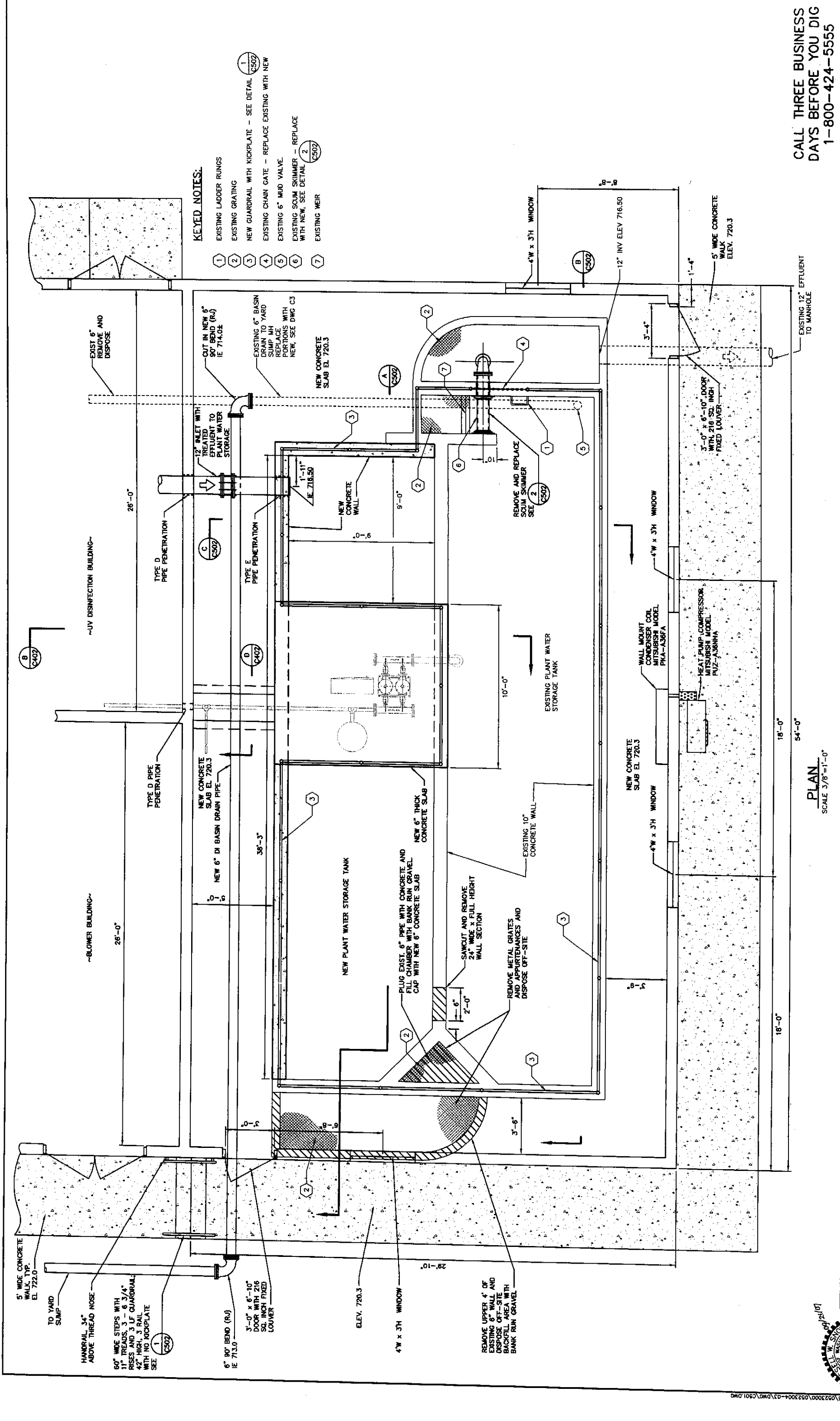
SEATTLE (206) 632-2664  
WENATCHEE (509) 662-1762  
OMAK (509) 826-3861  
LAKEWOOD (253) 472-1992

CITY OF ENTIAI  
2007 WASTEWATER TREATMENT  
FACILITIES IMPROVEMENTS

UV DISINFECTION SYSTEM BUILDING SECTIONS AND DETAILS

CALL THREE BUSINESS  
DAYS BEFORE YOU DIG  
1-800-424-5555

JOB NO. 0523004-03  
DRAWING NO. C-402  
SHEET OF



**KEYED NOTES:**

- 1 EXISTING LADDER RUNGS
- 2 EXISTING GRATING
- 3 NEW GUARDRAIL WITH KICKPLATE - SEE DETAIL C502
- 4 EXISTING CHAIN GATE - REPLACE EXISTING WITH NEW
- 5 EXISTING 6" MUD VALVE
- 6 EXISTING SCUM SKIMMER - REPLACE WITH NEW, SEE DETAIL C502
- 7 EXISTING WEIR

CALL THREE BUSINESS DAYS BEFORE YOU DIG  
1-800-424-5555

JOB NO. 0523004-03  
DRAWING NO. C501  
SHEET OF

CITY OF ENTIAI  
2007 WASTEWATER TREATMENT FACILITIES IMPROVEMENTS  
PLANT WATER STORAGE PLAN



**HAMMOND COLLIER WADE LIVINGSTONE**  
SEATTLE (206) 602-2664  
WENATCHEE (509) 662-1762  
OMAK (909) 626-8861  
LAKEWOOD (253) 472-1192

DESIGNED BY: R.S.  
DRAWN BY: M.R. DG  
CHECKED BY: J.M.  
APPROVED BY: J.M.  
DATE PRINTED: 09/20/07  
SCALE: AS SHOWN  
P.B. NO.

GENERAL NOTES

REVISIONS

**PLAN**  
SCALE 3/8"=1'-0"

